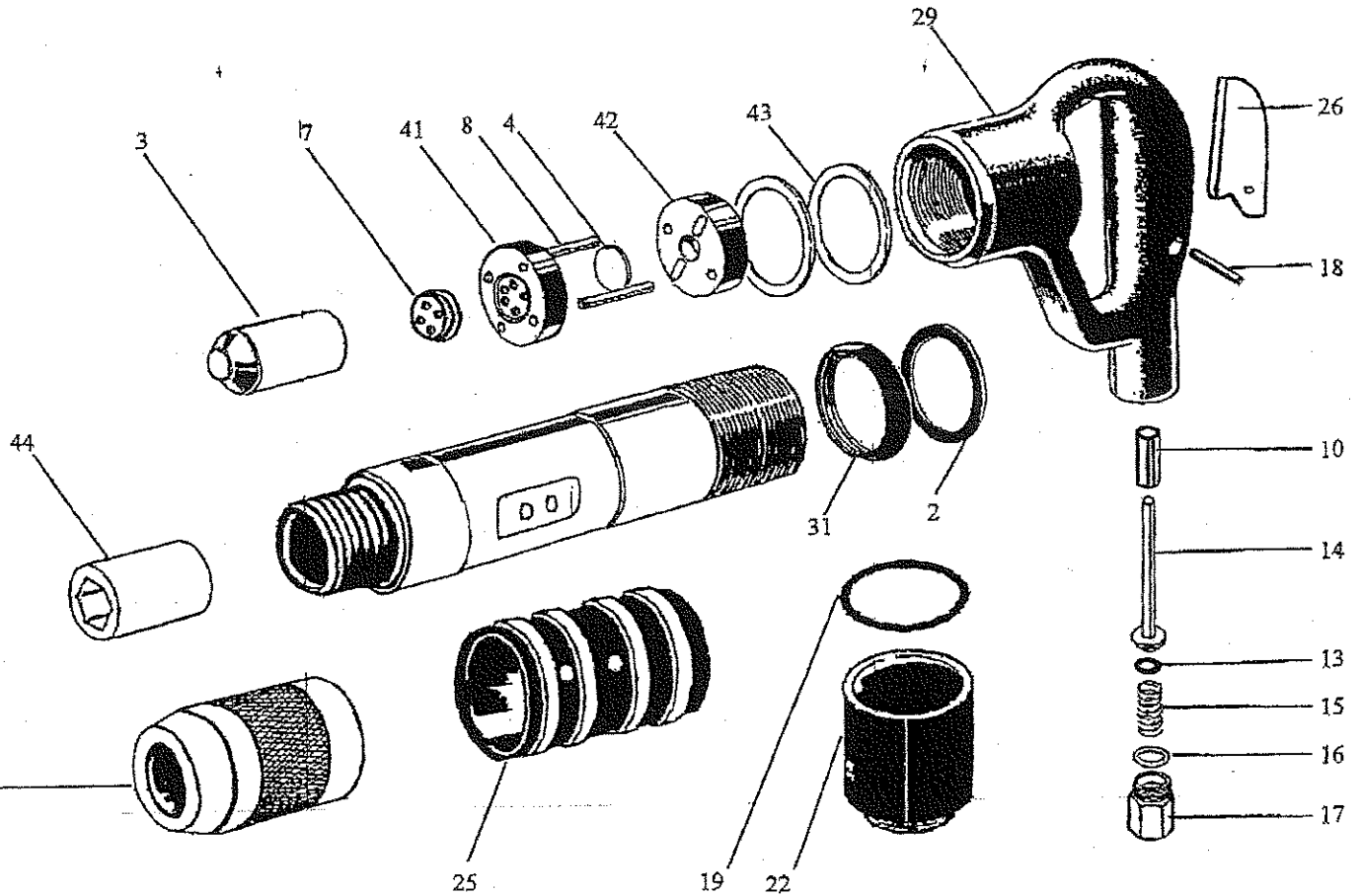


Crowder Supply Co, Inc. 8495 Roslyn St Commerce City, CO 80022 (303) 433-5144 FAX: (303) 433-3928 Toll Free: (888) 883-5144 www.crowdersupply.com



INDEX	PART	DESCRIPTION	INDEX	PART	DESCRIPTION
1	9245-9969-00	BARREL	19	3310-0933-00	RETAINER O-RING
2	9245-9963-10	LOCK RING BUMPER	22	9245-9969-11	NEOPRENE RETAINER BUMPER
3	9245-9963-30	PISTON	25	9245-9964-40	EXHAUST DEFLECTOR
4	9245-9963-50	VALVE PLATE	26	9245-9982-96	TRIGGER
5	9245-9963-60	BUMPER VALVE SEAT	29	9245-9983-04	HANDLE BARE
8	9245-9963-70	VALVE DOWEL (2)	NS	9245-9983-03	HANDLE COMPLETE
12	9245-9982-97	THROTTLE VALVE BUSHING	NS	9245-9965-10	SWIVEL(7/8 - 24, 1/2" HOSE BARB)
13	9245-9982-99	THROTTLE VALVE O-RING	41	9245-9965-50	FRONT VALVE SPACER HOUSING
14	9245-9982-98	THROTTLE VALVE	42	9245-9965-60	UPPER VALVE PLATE
15	9245-9963-01	THROTTLE VALVE SPRING	43	9245-9965-70	INTER-LOCK RING (2)
16	9245-9983-02	AIR INLET O-RING	44	9245-9965-80	BUSHING FOR ROUND SHANK (.680")
17	9245-9983-00	AIR INLET BUSHING	44	9245-9965-90	BUSHING FOR HEX SHANK (.580")
18B	9245-9964-20	LEVER FULCRUM PIN	28	9247-9969-10	SCREW-ON RETAINER
			31	9245-9971-00	HANDLE LOCK RING

SERVICE NOTE: When re-assembling this tool following any cleaning or service procedure, the two piece INTER LOCK RINGS (PN: 6143) must be replaced inside handle or handle will not lock in the tightened position and may vibrate loose when operating the tool (a small amount of thread locking compound may also be applied to barrel threads before the handle LOCK RING PN: 6131 is tightened in place.)