

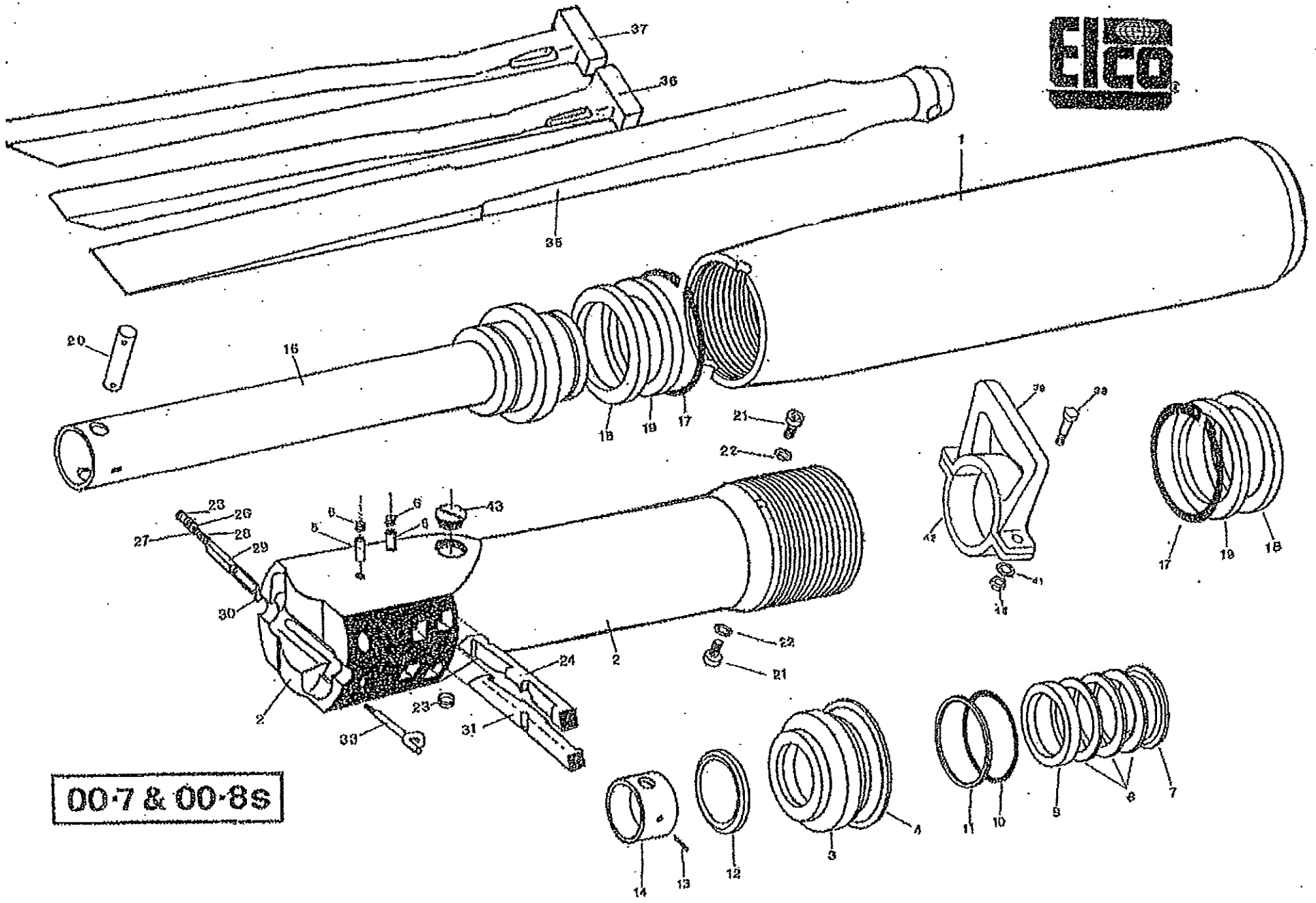
**PARTS LIST FOR
CYLINDERS 00-7, 00-8S AND 11S
AND
06-200 COMMANDING VALVE**

NOTE:

Always Indicate part number or code when ordering parts.

Always indicate the serial number of the cylinder or pump when corresponding or ordering parts.

See current price list for prices and shipping weights.



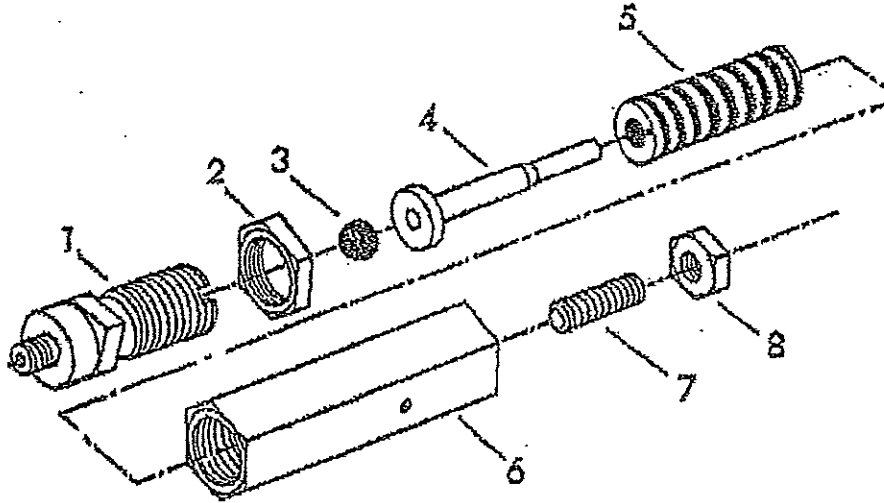
00-7 & 00-8s

ITEM NO	PART DESCRIPTION	NO. REQ'D	00-7/10K PART NO	00-8S/11S PART NO
1	MAIN CYLINDER SHELL	1	001-7	001-8
2	LOWER CYLINDER SHELL	1	002-7	002-8
3	STUFFING BOX	1	004-7	004-8
4	LOCK RING	1	0100-7	0100-8
5	LOCK PIN	4	0101	0101
6	SCREW	4	0099	0099
7	TOP SUPPORT STUFFING BOX SEAL	1	0064-7*	0067-8*
8	STUFFING BOX SEAL	3	0065-7*	0065-8*
9	LOWER SUPPORT STUFFING BOX SEAL	1	0066-7*	0066-8*
10	O-RING	1	0060-7*	0060-8*
11	SUPPORT RING	1	0079-7*	0079-8*
12	DIRT WIPER	1	0076-79*	0076-8*
13	PIN	1	0080	0080
14	GUIDE RING	1	0048-7	0048-8
16	PISTON	1	0046-7	0046-8
17	LOCK RING	2	0082-7	0082-8
18	PISTON SEAL	2	0063-7*	0063-8*
19	SUPPORT PISTON SEAL	2	0062-7*	0062-8*
20	PLUG PIN	1	0094-7	0094-8
21	LOCK SCREW	2	0069	0069
22	WASHER	2	0084	0084
23	PLASTIC PLUG	3	0085	0085
24	UPPER WEAR PLATE	2	007-7812	007-7812
26	NUT	2	0086	0086
27	WASHER	2	0087	0087
28	SPRING	2	0088	0088
29	SLEEVE	2	0089	0089
30	O-RING	2	0090	0090
31	LOWER WEAR PLATE	2	008-7812	008-7812
33	FEATHER LOCK LEVER	2	0092	0092
35	PLUG	1	010-7	010-8
36	FEATHER LOCK LEVER	2	011-7	011-8
37	FEATHER - ENLARGING	2	011-73	011-83
38	BOLT	2	017-104	017-104
39	HANDLE	1	017-102	017-112
40	NUT	2	304	304
41	LOCK WASHER	2	303	303
42	BACK PLATE	1	017-103	017-113
43	SCREW PLUG	1	0093-789	0093-789

THESE PARTS ARE INCLUDED IN REPAIR KIT - #08-7 FOR 00-7/10K CYLINDER AND #08-8 FOR 00-
* 8S/11S CYLINDER

PARTS FOR PRESSURE-MATIC VALVE 06-300

The 06-300 pressure-matic valve is factory set to operate the hydraulic cylinder at 7100psi. Do not adjust to any higher setting than 7100psi.



ITEM NO	PART NO	DESCRIPTION	NO. REQ.
1	0660	Valve Seat	1
2	0667	Housing Lock Nut	1
3	0661	Ball	1
4	0666	Valve Stem	1
5	0662	Spring	1
6	0665	Valve Housing	1
7	0663	Set Screw	1
8	0664	Lock Nut	1

PRESSURE ADJUSTMENT PROCEDURE

#06-300 PRESSURE-MATIC VALVE

1. Remove reservoir cover plate screws and tip cover plate so you have access to the valve
2. Loosen Housing Lock Nut (#2). Turn Valve Housing (#6) clockwise to increase pressure and counterclockwise to decrease pressure.
3. Loosen Lock Nut (#8). Turn Set Screw (#7) until it touches the end of Valve Stem (#4). Back off Set Screw (#7) 1/8 turn.
4. Tighten Lock Nuts (#2 and #8)
5. Recheck pressure and install cover plate.