

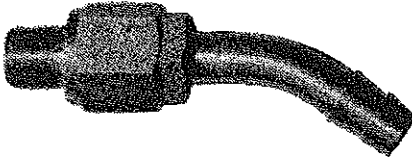


# MODEL 4000 CLAY DIGGER & PIN DRIVER



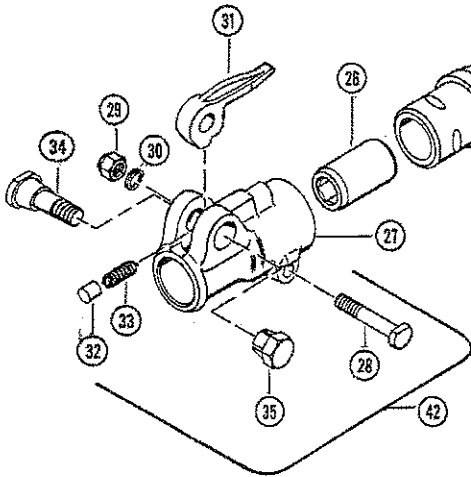
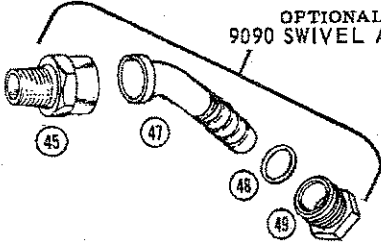
20 LB GLASS

OPTIONAL  
9090 SWIVEL ASSY.



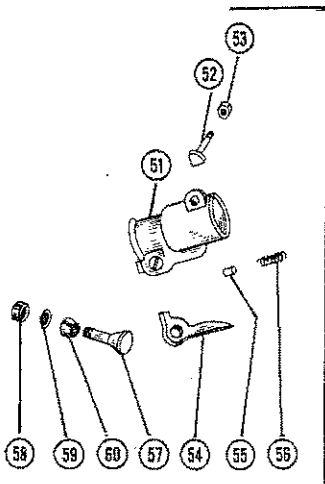
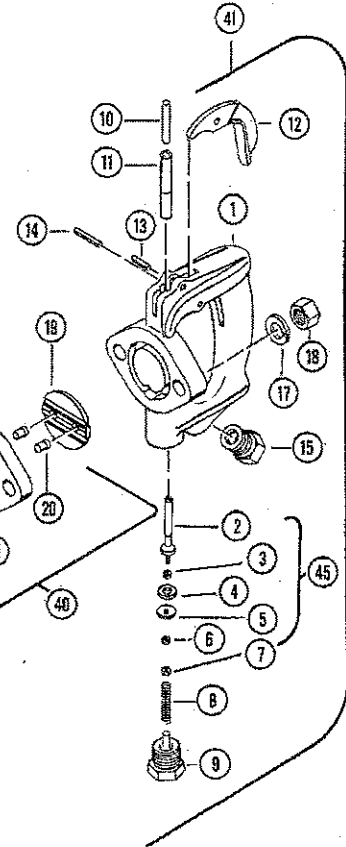
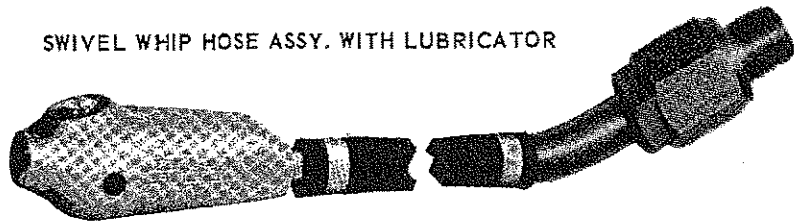
3/8" NPT x 1/2" HOSE BARB

OPTIONAL  
9090 SWIVEL ASSY.



43 BOLT ASSY.

SWIVEL WHIP HOSE ASSY. WITH LUBRICATOR



69 SYM. 69, FRONT HEAD ASSEMBLY WITH COMPONENT PARTS, IS FOR APT 125 (BOTH NEW AND OLD TYPE) AND ORIGINAL INGERSOLL-RAND 73. APT 125 & APT 117 FRONT HEAD ASSEMBLIES ARE VIRTUALLY THE SAME, WHICH INTERCHANGES WITH HATCO 4014/4015, 30 LB. PAVING BREAKER. SEE CROSS-REFERENCE ON OPPOSITE PAGE.

## HARPER 20 LB. CLAY DIGGER - INTERCHANGE PARTS LIST

SYM. NO.	NAME OF PART DESCRIPTION	AMT REQ	HARPER PART NO.	A.P.T. PART NO.	I-R PART NO.
1	Backhead (Handle) Bare	1	62201	Sym. 41) 2495	See Sym. 41
2	Throttle Valve (Bare)	1	62202	Sym. 45) 2496	See Sym. 45
3	T. V. Face (Gasket) Lockwasher	1	62203	1396	03014099
4	T. V. Face (Gasket/Seal)	1	62204	2340	03014107
5	T. V. Face Cap (Ret. Washer)	1	62205	2339	03014099
6	T. V. Face Cap Lockwasher	1	62206		
7	T. V. Face Cap Nut	1	62207	2338	73H-158
8	T. V. Spring	1	62208	772	H80-11
9	T. V. Cap Assy. (Inc. Spring Guide Pin)	1	62209	2336	03035581
10	T. V. Plunger (Pin)	1	62210	2343	03035540
11	T. V. Plunger Bushing	1	62211	2342	03035557
12	Throttle Lever	1	62212	2341	97MP-18
13	Throttle Lever Pin (Short)	1	62213	274	
14	Throttle Lever Pin (Long)	1	62214	307	13SR-265
15	Air Inlet Adapter with Air Screen	1	62215	285	H80-82A
16	Backhead (Handle) Bolt	2	62216	Sym. 43) 1612	A-9
17	Backhead Bolt Lockwasher	2	62217	233	H80-67
18	Backhead Bolt Nut	2	62218	706	H3R-8
19	Valve (Automatic)	1	62219	746	730H-40
20	Valve Dowel Pin	2	62220	1236	73H-45
21	Valve Box (Chest, Inc. Sym. 20)	1	66321	4880	73H-41
22	Valve Box Alignment Pin	1	62222	1235	73H-21
23	Piston Hammer	1	62223	811	73H-200A
24	Cylinder Bushing	1	62224	2344	73H-101
25	Cylinder (Barrel)	1	62225	Sym. 44) 3118	See Sym. 44
26	Chuck Bushing (Nozzle) 7/8" x 3-1/4"	1	62226	785	73H-86
27	Front Head (Bare) 7/8" Hex x 3-1/4"	1	62227	*SEE NOTES	73L-240
28	F. H. Retainer (Pinch) Bolt	1	62228	BELOW	73L-145
29	F. H. Retainer Bolt Nut	1	62229	" " "	FM-544
30	F. H. Retainer Bolt Lockwasher	1	62230	" " "	
31	Steel Retainer Lever, 7/8" x 3-1/4"	1	62231	" " "	59H-241
32	Steel Retainer Plunger	1	62232	" " "	73L-245
33	Steel Retainer Plunger Spring	1	62233	" " "	73L-246
34	Steel Retainer Lever Bolt	1	62234	3132	*SEE NOTES
35	Steel Retainer Lever Bolt Nut	1	62235	3133	BELOW
38	S. R. Lever Bolt Assy. (Inc. Syms. 34 & 35)		62236		" " "
40	Valve Assy. (Automatic) Complete		62240	751	73U-41
41	Backhead (Handle) Complete		62241	2335	73U-92 or 03035565
42	Front Head Complete, 7/8" x 3-1/4"		62242	*SEE NOTES	73L-A240
43	Backhead Bolt Assy. (Syms. 16, 17 & 18)		62243	708	
44	Cylinder Assy. (Inc. Syms. No 24 & 25)		62244	3119	73L-H100
45	Throttle Valve Assy. Complete		62245	2337	03013877
*PARTS INTERCHANGE LISTED BELOW IS FOR APT 125, (BOTH NEW & OLD TYPE) AND ORIGINAL INGERSOLL-RAND 73 (AS INDICATED) REPLACEMENTS ONLY. APT 125 & APT 117 FRONT HEAD ASSEMBLIES ARE VIRTUALLY THE SAME, WHICH INTERCHANGES WITH HATCO 4014/4015, 30 LB. PAVING BREAKER, PER CROSS-REFERENCE BELOW.					
51	Front Head (Bare) 7/8" Hex x 3-1/4"		66321	3123	
52	F. H. Retainer (Pinch) Bolt		66339	3134	
53	F. H. Retainer Bolt Nut		66340	2332	
54	Steel Retainer Lever, 7/8" x 3-1/4"		66328	893	
55	Steel Retainer Plunger		66333	207	
56	Steel Retainer Plunger Spring		66334	2949	
57	Steel Retainer Lever Bolt		66329	6334	59H-242
58	Steel Retainer Lever Bolt Nut		66925	208	59H-243
59	Steel Retainer Lever Bolt Lockwasher		66924	6335	
60	Steel Retainer Lever Bolt Bushing (Metal)		66332	205	59H-244
69	Front Head Complete, 7/8" Hex x 3-1/4"		66369	3143	

When ordering parts, please specify: MAKE, MODEL, PART NUMBER and PART DESCRIPTION.