



MODEL 4020 PAVING BREAKER



40 / 45 LB. CLASS

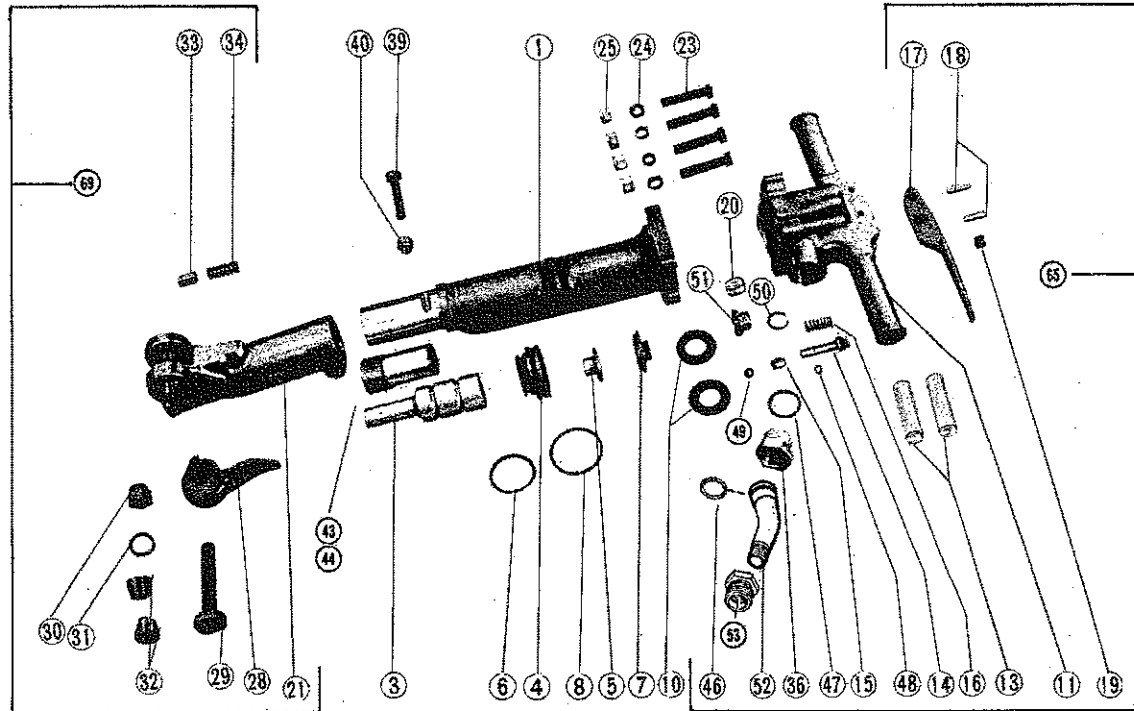
HARPER MODEL

4020 - 1" x 4-1/4" HEX CHUCK

OPTIONAL
(RECOMMENDED)



MODEL 9075
CONSTANT FEED
LINE OILER
(1/2 Pt. Capacity)
Attach to Swivel Air Inlet



VALVE SPRING WASHERS (Sym. 10) should be installed on VALVE COVER (Sym. 7) with cupped sides facing Backhead, as shown, to achieve proper spacing and spring tension.

58 AIR SCREEN (Not Available Separately, Use Sym. 52)

PARTS LIST

SYM NO.	PART NO.	AMT REQ	DESCRIPTION	SYM NO.	PART NO.	AMT REQ	DESCRIPTION
1	66401	1	Cylinder	30	66930	1	S.R. Bolt Nut
3	66403	1	Piston Hammer	31	66931	1	S.R. Bolt Lockwasher
4	66404	1	Valve Chest	32	66932	2	S.R. Bolt Bushing
5	66405	1	Valve	33	66933	1	S.R. Plunger
6	66406	1	V.C. O/Ring (Small)	34	66934	1	S.R. Plunger Spring
7	66407	1	Valve Cover	36	66436	1	Swivel Nut
8	66408	1	V.C. O/Ring (Large)	39	66339	1	Front Head Bolt
10	66410	2	Valve Spring Washers	40	66340	1	F.H. Bolt Nut
11	66411	1	Backhead (Bare)	43	66443		Ck Bushing 7/8" X 3-1/4"
13	66913	2	Rubber Grips	44	66444	1	Ck Bushing 1" X 4-1/4"
14	66414	1	T.V. Push Pin	46	66622	1	Swivel O/Ring
15	66415	1	T.V. Pin Bushing	47	66637	1	Swivel Nut O/Ring
16	66313	1	T.V. Pin Spring	48	66448	1	T.V. Pin O/Ring
17	66917	1	Throttle Lever	49	66449	1	Throttle Valve Ball
18	66918	2	T. Lever Pin	50	66450		Oiler Cap O/Ring
19	66419		Oil Plug	51	66451		Oiler Cap
20	66420		Oil Element	52	66635	1	Air Inlet Swivel w/Screen
21	66421	1	Front Head (Bare)	53	66453	1	Adapter 1/2" NPTF X 3/4" NPTM
23	66323	4	Backhead Bolt	58	N/A/S	1	Air Screen (Order Sym. 52)
24	66324	4	B.H. Bolt Lockwasher	65	66465		Backhead Complete
25	66325	4	B.H. Bolt Nut	69	66469		Front Head Complete w/Ret.
28	66928	1	Steel Retainer				
29	66929	1	S.R. Bolt				

NOTE: N/A/S

P/N - Not Available Separately

Sym. Nos. 19, 20, 50 and 51 are not used in current production of Models 4019/4020 Breakers.