

CROWDER SUPPLY CO., INC. - 8495 ROSLYN ST. - COMMERCE CITY, CO 80022 - TOLL FREE 888-883-5144 - www.crowdersupply.com

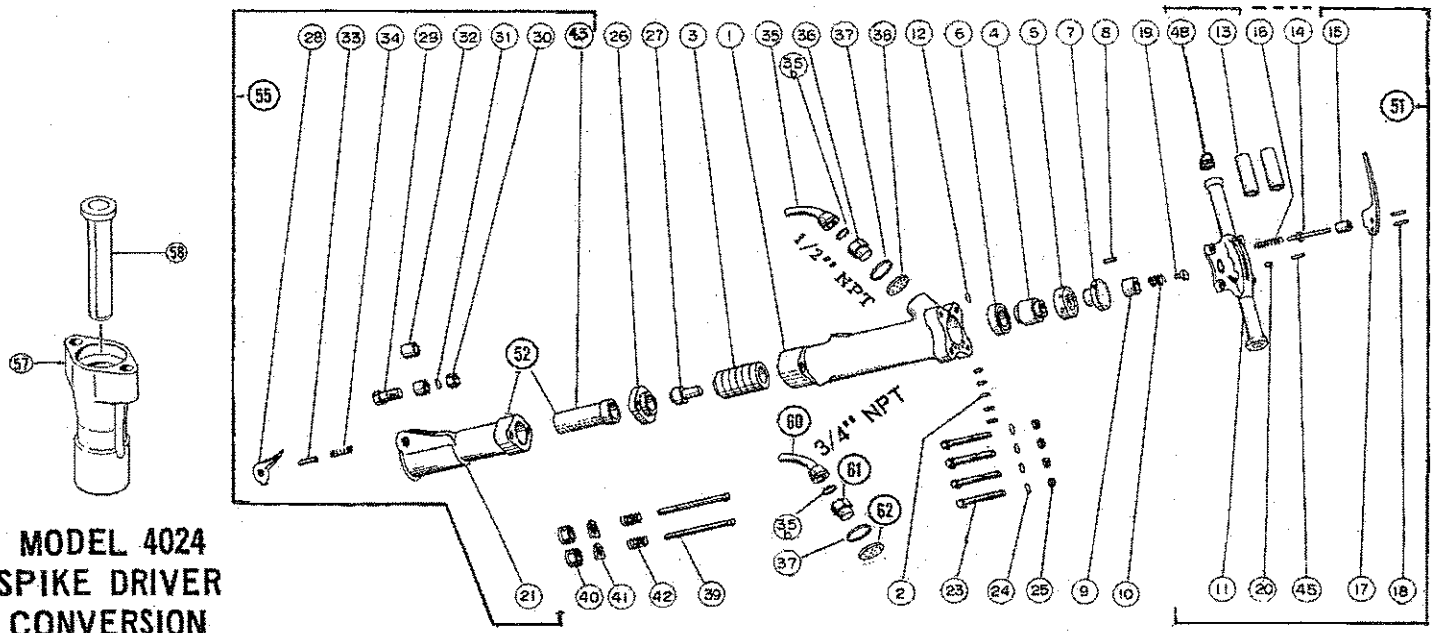


MODEL 4025 PAVING BREAKER

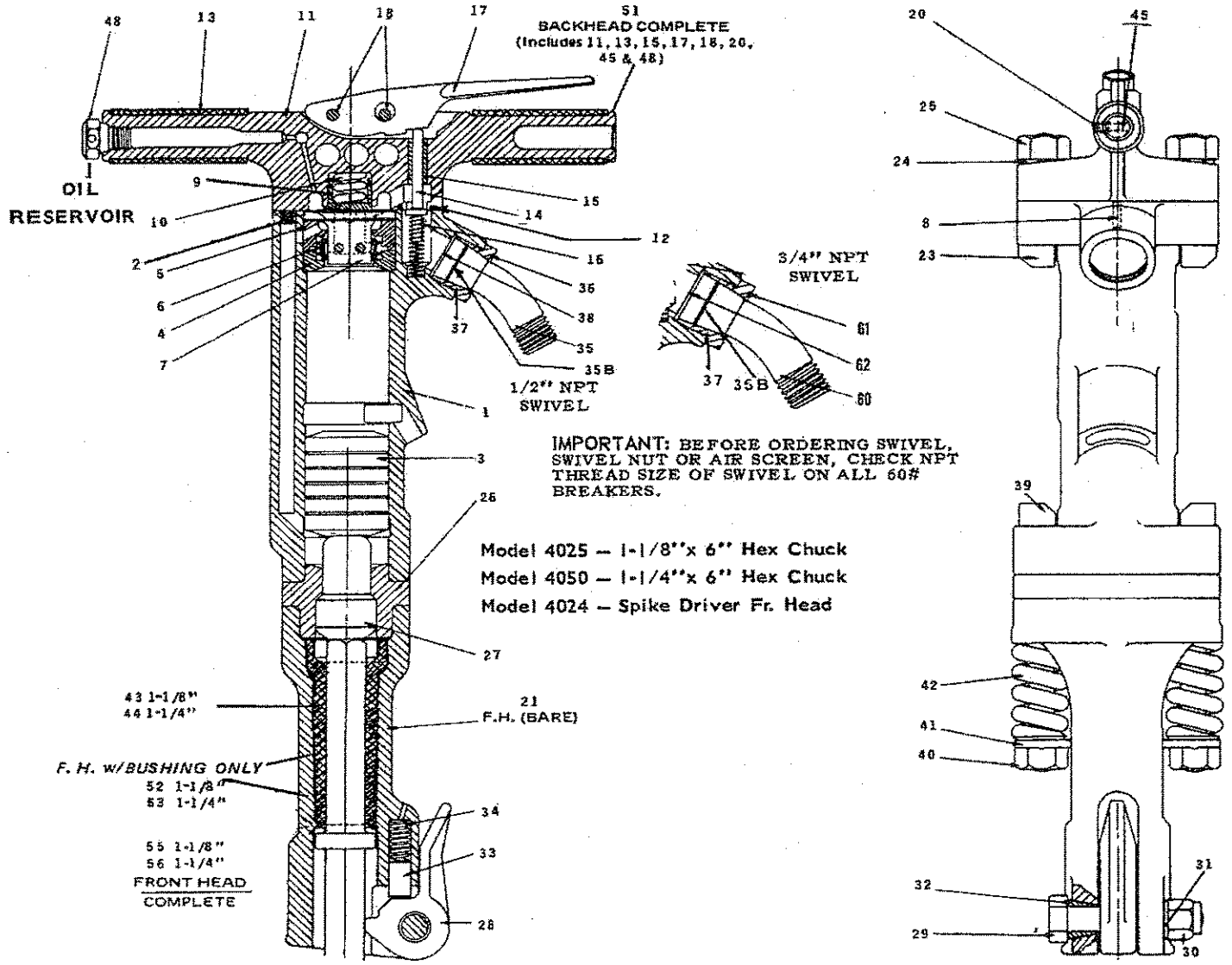
4050
4024 SPIKE DRIVER



60 LB. CLASS



MODEL 4024 SPIKE DRIVER CONVERSION



ALL HATCO 60# BREAKERS PURCHASED AFTER 6/1/79 SHOULD HAVE 3/4" NPT SWIVEL.

HARPER 60 LB. BREAKERS - INTERCHANGE PARTS LIST

HARPER SYM. NO.	NAME OF PART DESCRIPTION	AMT. REQ.	FOUR (4) BOLT BACKHEAD			TWO (2) BOLT BACKHEAD	
			HARPER PART NO.	A.P.T. PART NO.	KENT PART NO.	THOR TOOL CO. PART NO.	
						OLD NO.	NEW NO.
1	Cylinder (Bare)	1	66601		4036		
2	Cylinder Plugs	3	66902		4039		
3	Piston Hammer	1	66603	174	43	C-2315	43436
4	Automatic Valve	1	66904	104	5700	C-747	43186
5	Valve Chest, Rear	1	66605	171	5806	C-2311	43432
6	Valve Chest, Front	1	66606	170	5805	C-2310	43431
7	Valve Guide	1	66607	169	5804	C-2309	43430
8	Valve Chest Dowel Pin	1	66908	115	5701	C-2308	43477
9	Plunger (Backhead)	1	66909	113	1297	C-2505	43474
10	Plunger Spring	1	66910	114	1298	C-2506	43475
11	Back Head (Bare)	1	66611		4035		
12	Back Head Seal O-Ring	1	66912	150	5706	C-38206	45353
13	Rubber Grip	2	66913	160	1299	C-2507	43476
14	Throttle Valve	1	66914	133	1285	C-2005	43396
15	Throttle Valve Stem Guide	1	66915	106	1294	C-2004	43395
16	Throttle Valve Spring	1	66916	107	1291	C-2006	43397
17	Throttle Lever	1	66917	132	1296	C-2302	43428
18	Throttle Lever Pin	2	66918	105	1292	C-2002	43393
N/S	Special B.H. Filler Plug (1/2" N.P.T.)		66619				
20	Oil Control Plug	1	66920	111	1286	C-2503	68073
21	Front Head (Bare)	1	66621		2020		
23	Back Head Bolt	4	66623	239	2024	C-2328	43441
24	B.H. Bolt Lock Washer	4	66924	102	2026	C-51	43007
25	Back Head Bolt Nut	4	66925	121	2025	C-2028	43418
26	Tappet Seat	1	66626	175	2021	C-2319	43437
27	Tappet	1	66627	262	61	C-2018	43408
28	Steel Retainer	1	66928	130	1136	C-2569	43527
29	Steel Retainer Bolt	1	66929	426	1132	C-2566	43524
30	Steel Retainer Nut	1	66930	129	1133	C-2567	43525
31	Steel Ret. Lock Washer	1	66931	102	2026	C-51	43007
32	Steel Ret. Bolt Bushing	2	66932	127	5719	C-2565	43523
33	Steel Ret. Plunger	1	66933	126	1287	C-2564	43522
34	Steel Ret. Spring	1	66934	125	1288	C-2563	43521
35	Air Inlet Swivel (1/2" NPT)	1	66635	179	5802	C2346	43446
35B	Swivel O-Ring	1	66622	1269	5807	C-3114	83038
36	Swivel Nut (For 1/2" NPT)	1	66636	167	5803	C-2345	51011
37	Swivel Nut O-Ring	1	66637	151	5807	C-3114	83038
38	Air Inlet Screen (For 1/2")	1	66638	178	5801	C-2338	43443
39	Front Head Bolt	2	66639	261	1128	C-2025	43415
40	Front Head Nut	2	66940	110	1129	C-2024	43414
41	F.H. Bolt Lock Washer	2	66941	154	1289	C-2023	43413
42	F.H. Bolt Spring	2	66942	109	1290	C-2022	43412
43	F.H. Bushing 1-1/8"	1	66643		1400		
44	F.H. Bushing 1-1/4"	1	66644		1401		
45	Oil Control Felt	1	66945	112	1284	C-2504	43473
48	Oil Res. Plug	1	66648	168	2027	C-734	43175
51	Back Head Complete		66651		4035		
52	Fr. Hd. w/Bushing only 1-1/8"		66652	180	2020	C-2373	43448
53	Fr. Hd. w/Bushing only 1-1/4"		66653	181	2023	C-2378	43445
55	Fr. Hd. Complete w/Ret. 1-1/8"		66655	182	4038		
56	Fr. Hd. Complete w/Ret. 1-1/4"		66656	183	4037		
57	Front Head Spike Driver		66657				
58	Dolly (Ram) Spike Driver		66658				
60	Air Inlet Swivel (3/4" NPT)		66935				
61	Swivel Nut (For 3/4" NPT)		66936				
62	Air Inlet Screen (For 3/4"		66938				

WHEN ORDERING PARTS, PLEASE SPECIFY: MAKE, MODEL, PART NUMBER AND PART DESCRIPTION.