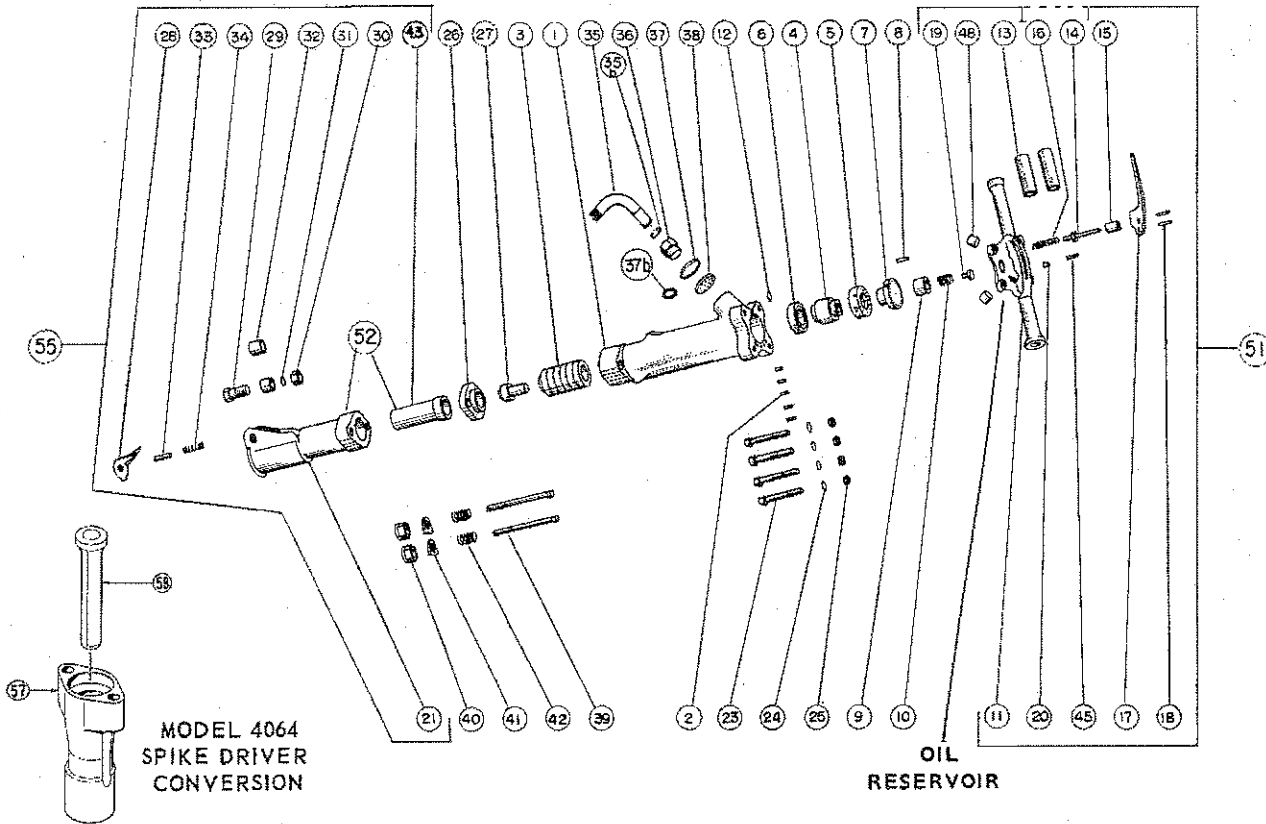


MODEL 4065 4070 PAVING BREAKER

4064 SPIKE DRIVER

75/80 LB. GLASS



PARTS LIST

SYM NO.	PART NO.	AMT REQ	DESCRIPTION	SYM NO.	PART NO.	AMT REQ	DESCRIPTION
1	66701	1	Cylinder (Bare)	29	66729	1	Steel Ret Bolt
2	66702	5	Cylinder Plug	30	66730	1	Ret. Bolt Nut
3	66703	1	Piston, Hammer	31	66731	1	R.B. Lock Washer
4	66704	1	Automatic Valve	32	66732	2	R.B. Bushing
5	66705	1	Valve Chest Rear	33	66733	1	Ret. Plunger
6	66706	1	Valve Chest Front	34	66734	1	R.Plunger Spring
7	66707	1	Valve Guide Stem	35	66735	1	Air Inlet Swivel
8	66708	1	Vlv Chest Dowel Pin	35B	66722	1	Air Swivel Clamp
9	66709	1	Plunger, Backhead	36	66736	1	Swivel Nut
10	66710	1	B.H. Plunger Spring	37	66737	1	Swivel Nut Washer
11	66711	1	Backhead (Bare)	37B	66746	1	Swivel Nut O-Ring
12	66712	1	Port Seal O-Ring	38	66738	1	Air Swivel Screen
13	66713	2	Rubber Grip	39	66739	2	Front Head Bolt
14	66714	1	Throttle Valve	40	66740	2	F.H. Bolt Nut
15	66715	1	T. Vlv. Bushing	41	66741	2	F.H.B. Lock Washer
16	66716	1	T. Vlv. Spring	42	66742	2	F.H. Bolt Spring
17	66717	1	Throttle Lever	43	66743	1	F.H. Bushing 1-1/8"
18	66718	2	T. Lever Pin		66744		F.H. Bushing 1-1/4"
19	66719	1	Oil Filler Plug	45	66745	1	Oil Control Felt
20	66720	1	Oil Control Plug	48	66748	2	Oil Tank Plug
21	66721	1	Front Head (Bare)	51	66751	1	Backhead Complete
23	66723	4	Backhead Bolt	52	66752	1	F.H W/Bushing 1-1/8"
24	66724	4	B. H. Lock Washer		66753	1	F.H W/Bushing 1-1/4"
25	66725	4	B. H. Bolt Nut	55	66755	1	F.H Complete 1-1/8"
26	66726	1	Tappet Seat		66756	1	F.H Complete 1-1/4"
27	66727	1	Tappet	57	66757	1	F.H Spike Driver
28	66728	1	Steel Retainer	58	66758	1	Dolly(Ram)Spike Dr.