



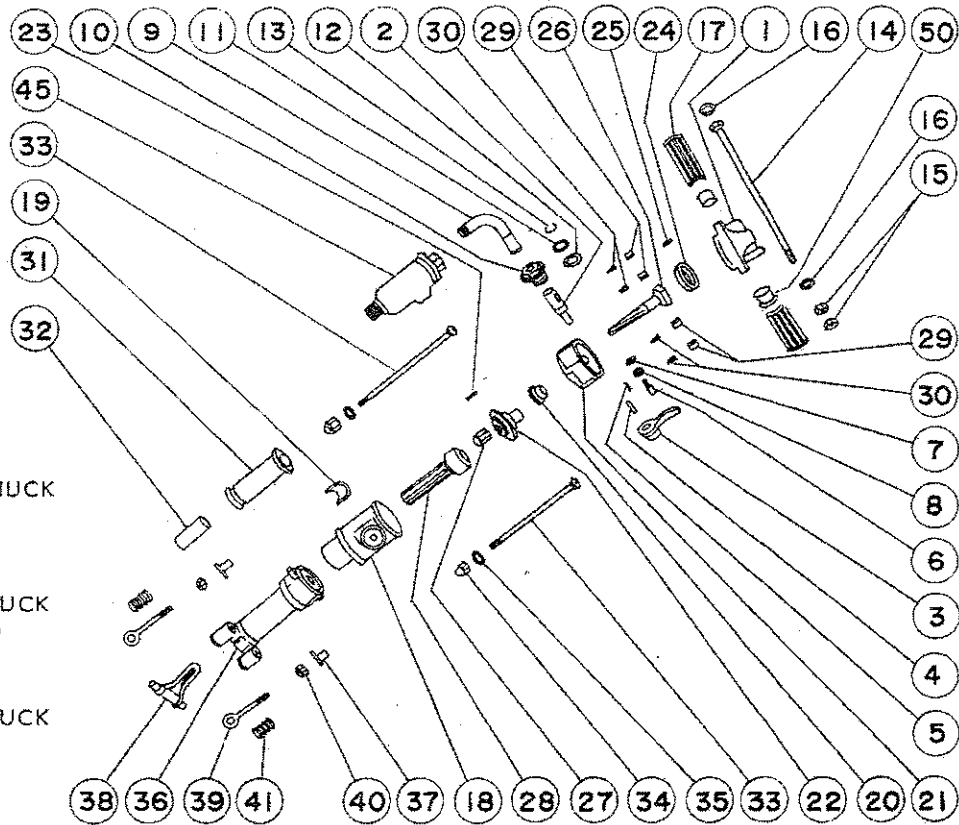
MODEL

4107
4108
4110

ROCK (SINKER) DRILLS



35 LB. CLASS



MODEL 4107
3/4" HEX X 3-1/4" CHUCK
(19mm x 82.6mm)

MODEL 4108
7/8" HEX x 3-1/4" CHUCK
(22.2mm x 82.6mm)

MODEL 4110
7/8" HEX x 4-1/4" CHUCK
(22.2mm x 108mm)

P/N 67051, HANDLE ASSY. COMPLETE
(INC. SYM. 14, 15, 16, 17 & 50)

PARTS LIST

SYM NO	PART NO	QTY	DESCRIPTION	SYM NO	PART NO	QTY	DESCRIPTION
1	67001	1	Back Head	25	67025	1	Ratchet Key
2	67002	1	T. Valve	26	67026	1	Rifle Bar
3	67003	1	T. V. Handle	27	67027	1	Rifle Nut
4	67004	1	T. V. Plunger	28	67028	1	Piston
5	67005	1	T. V. Spring	29	67029	4	Rotation Pawl
6	67006	1	T. V. Pin	30	67030	4	Pawl Spring
7	67007	1	T. V. Nut	31	67031	1	Chuck Driver 4107/08
8	67008	1	T. V. Washer		67046		" " 4110
9	67009	1	AirInlet Swivel	32	67032	1	Bushing 7/8"x3-1/4"
10	67010	1	Swivel Nut		67047		" 3/4"x3-1/4"
11	67011	1	" "O" Ring		67048		" 7/8"x4-1/4"
12	67012	1	" Washer	33	67033	2	Side Bolt
13	67013	1	" Clamp	34	67034	2	Side Bolt Nut
14	67014	1	Handle Bolt	35	67035	2	Side Bolt Washer
15	67015	1	H. B. Nut	36	67036	1	Front (Ck) Head 4107/08
16	67016	2	H. B. Washer		67049		" " " 4110
17	67017	2	Handle Grip	37	67037	2	F.H. Bushing
18	67018	1	Cylinder	38	67038	1	Steel Retainer
19	67019	1	Exhaust Cap	39	67039	2	S. R. Bolt
20	67020	1	Valve	40	67040	2	S. R. Nut
21	67021	1	Valve Chest	41	67041	2	S. R. Spring
22	67022	1	Valve Guide				Washer (Use 67040/41)
23	67023	1	Valve Pin	45	67045	1	Line Oiler
24	67024	1	Ratchet	50	67050	2	Handle Grip Spacer