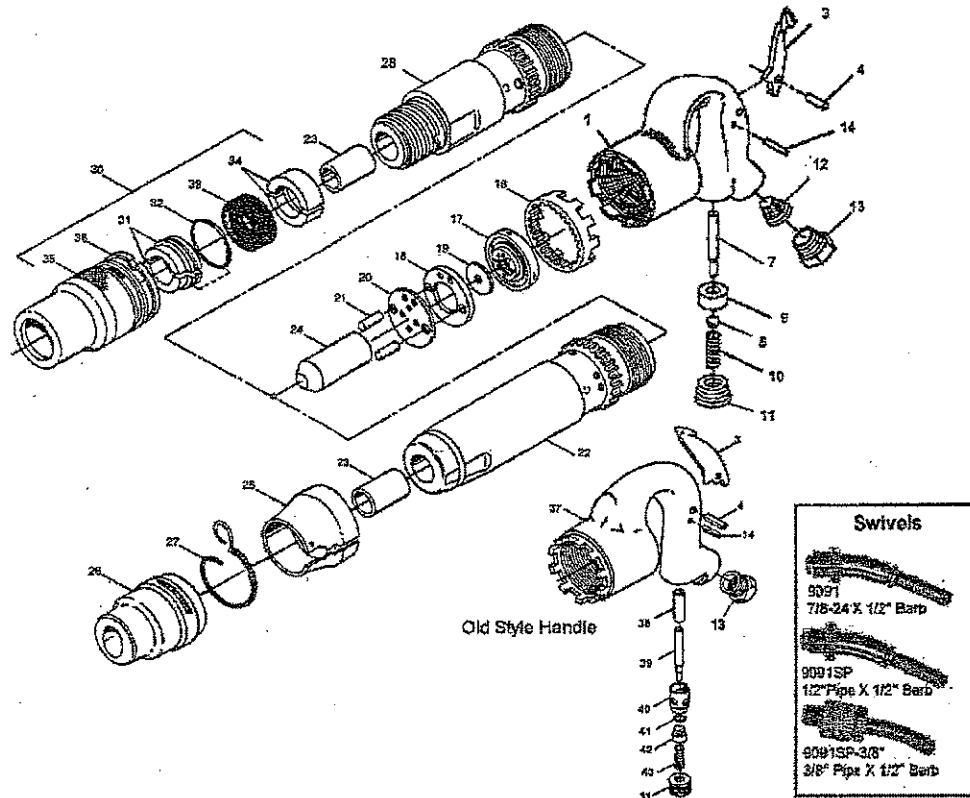


**INGERSOLL-RAND SIZE 1, 2, 3, AND 4 CHIPPING HAMMERS (15 lbs)  
INGERSOLL-RAND SIZE W1, W2, W3, W4 CHIPPNG HAMMERS**



Index	Part Number	Description	Index	Part Number	Description
1	HH-1B	HANDLE ASSEMBLY	24	HH1-5	PISTON, MODEL 1, W1, 2, W2
3	C-134	THROTTLE LEVER		HH4-5	PISTON, MODEL 2A, W2A, 3, W3
4	C-15	THROTTLE LEVER PIN		HH4-5	PISTON, MODEL 4, W4
5	HH-602A	THROTTLE VALVE BALL	25	HH85AP	EXHAUST DEFLECTOR
7	HH-604A	PUSH PIN	26	HH1-1190	CHISEL RETAINER-ARROW TYPE
9	HH-603A	THR. VALVE PLUNGER BUSHING	27	HH1-1194	RETAINER SPRING
10	HH-51	THROTTLE VALVE SPRING	28	HHW1-AH6	BARREL, MODEL W1 (1" STROKE)
11	HH-266	THROTTLE VALVE PLUG	28	HHW2-AH6	BARREL, MODEL W2 (2" STROKE)
12	834-61	AIR STRAINER	28	HHW2A-AH6	BARREL, MODEL W2A (2" STROKE)
13	H-282	PERMENANT BUSHING	28	HHW3-AH6	BARREL, MODEL W3 (3" STROKE)
14	H02-74	STOP PIN	28	HHW4-AH6	BARREL, MODEL W4 (4" STROKE)
16	HH-196A	LOCK RING	30	HHW1-A300	RETAINER COMPLETE- INCLUDES:
17	HH-4	VALVE CHEST LID	31	HHW1-213	LOWER RETAINER WASHER SET
18	HH-8A	VALVE CHEST SPACER	32	R000A2-103	O-RING
19	HH-2A	VALVE	33	H3R-203	RUBBER BUFFER
20	HH-3	VALVE CHEST BOTTOM	34	H3R-31	UPPER RETAINER WASHER SET
21	HH-32	VALVE CHEST DOWEL (2)	35	HHW1-300	RETAINER BODY
22	HH1-AH106	BARREL, MODEL 1 (1" STROKE)	36	24SR-207	RETAINER CLIP
22	HH2-AH106	BARREL, MODEL 2 (2" STROKE)	37	HH-1A	HANDLE ASSY
22	HH2A-AH106	BARREL, MODEL 2A (2" STROKE)	38	H02-65S	PUSH PIN BUSHING
22	HH3-AH106	BARREL, MODEL 3 (3" STROKE)	39	HH-604	PUSH PIN
	HH4-AH106	BARREL, MODEL 4 (4" STROKE)	40	HH-603	VALVE GUIDE
23	B01-7B	CHISEL BUSHING-HEX	41	AVC11-259	THROTTLE VALVE SEAL
	B01-19B	CHISEL BUSHING-ROUND	42	HH-602	THROTTLE VALVE
			43	AR-274	THROTTLE VALVE SPRING