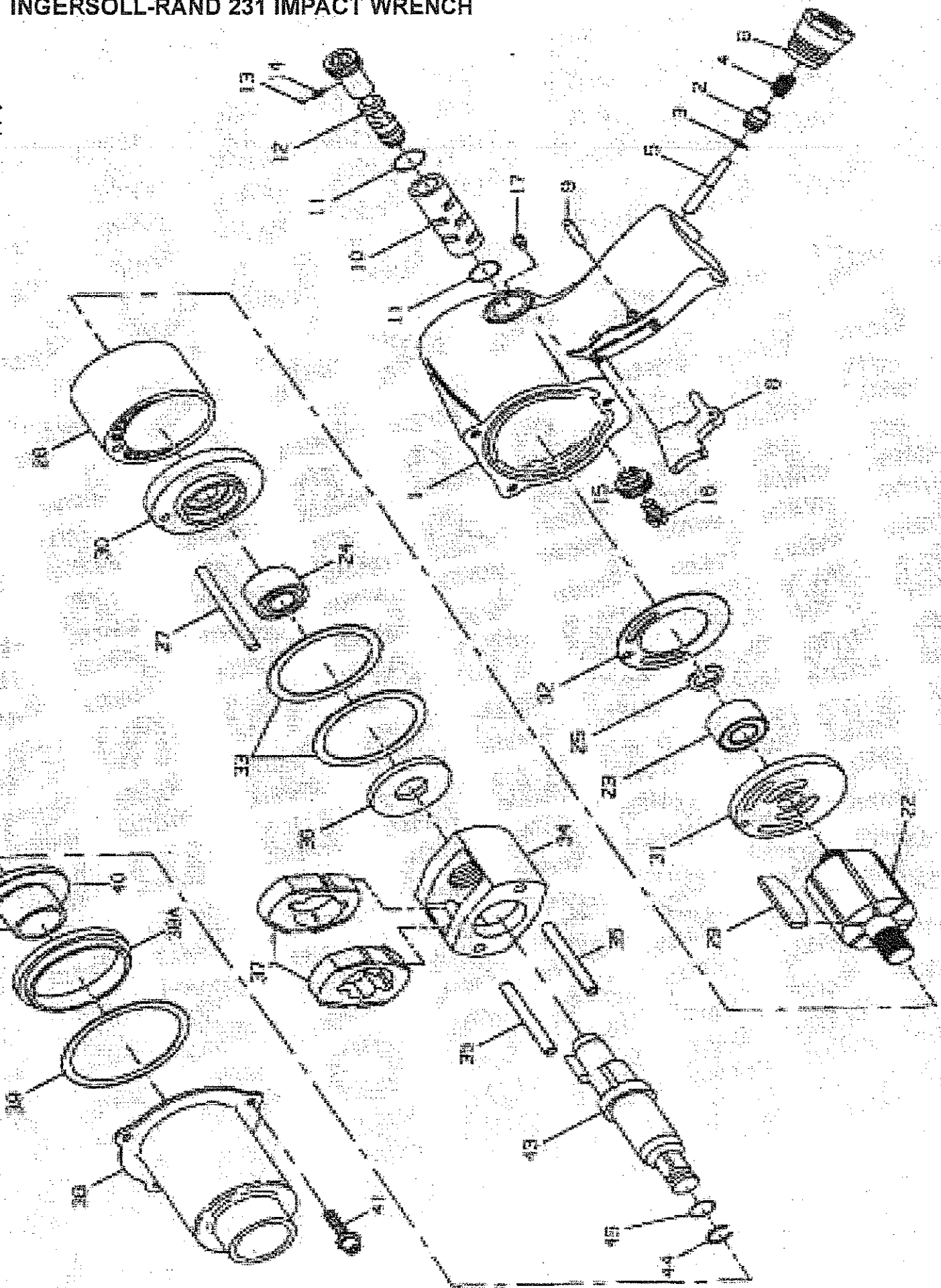


INGERSOLL-RAND 231 IMPACT WRENCH

CROWDER SUPPLY CO., INC. - 8495 ROSLYN ST. - COMMERCE CITY, CO 80022 - TOLL FREE 888-883-5144 - www.crowdersupply.com



INGERSOLL RAND
231 IMPACT WRENCH

1	MOTOR HOUSING ASSEMBLY	231-A40A
2	THROTTLE VALVE ASSEMBLY	404-50
* 3	THROTTLE VALVE FACE	405-159
* 4	THROTTLE VALVE SPRING	R1A-51
5	THROTTLE VALVE STEM	
	FOR HOUSING WITH INLET	
	AT REAR OF HANDLE	402-302
	FOR HOUSING WITH INLET	
	AT FRONT OF HANDLE	230-302
6	AIR STRAINER ASSEMBLY	402-565
8	TRIGGER	705-93
9	TRIGGER PIN	533-656
10	REVERSE VALVE BUSHING	231-A330
* 11	REVERSE VALVE BUSHING SEAL	PS3-67
12	REVERSE VALVE	231-329A
* 13	REVERSE VALVE DETENT BALL	AV1-255
* 14	REVERSE VALVE DETENT SPRING	231-664
15	REVERSE VALVE KNOB	231-666
16	REVERSE VALVE KNOB SCREW	231-665
17	GREASE FITTING	130SR-188
*	HOUSING LABEL	WARNING-2-99
22	ROTOR	231-53
* 23	REAR ROTOR BEARING	402-22
* 24	FRONT ROTOR BEARING	4U-97
* 25	REAR ROTOR BEARING RETAINER	402-118
26	CYLINDER	407-3
27	CYLINDER DOWEL	230-98
* 29	VANE PACKET (SET OF 6 VANES)	231-42A-6
30	FRONT END PLATE	231-11
31	REAR END PLATE	231-12
* 32	END PLATE GASKET	231-283
33	MOTOR CLAMP WASHER (2)	227-207
34	HAMMER FRAME ASSEMBLY	231-A703
35	HAMMER PIN (2)	231-704
36	HAMMER FRAME REAR WASHER	231-706
37	HAMMER (2)	231-724
38	HAMMER CASE ASSEMBLY	705-A927
38A	HAMMER CASE PIVOT	405-000
* 39	HAMMER CASE GASKET	230-36
40	HAMMER CASE BUSHING	305-941
41	HAMMER CASE CAP SCREW (3)	231-638
43	ANVIL ASSEMBLY	
	STANDARD LENGTH	231B-A626
	2" EXTENDED LENGTH	231-A414A-2
* 44	SOCKET RETAINER	231-425A
* 45	RETAINER O-RING	R1A-259
*	TUBE OF GREASE	405-MG1
*	LUBE INJECTOR	230-228
*	BOTTLE OF OIL	405-MO1
*	PLASTIC BOOT	231-P32
*	NAMEPLATE	231-301
*	REVERSE VALVE BUSHING ARBOR	403-100
*	HOSE WHIP	RD-130

* NOT ILLUSTRATED