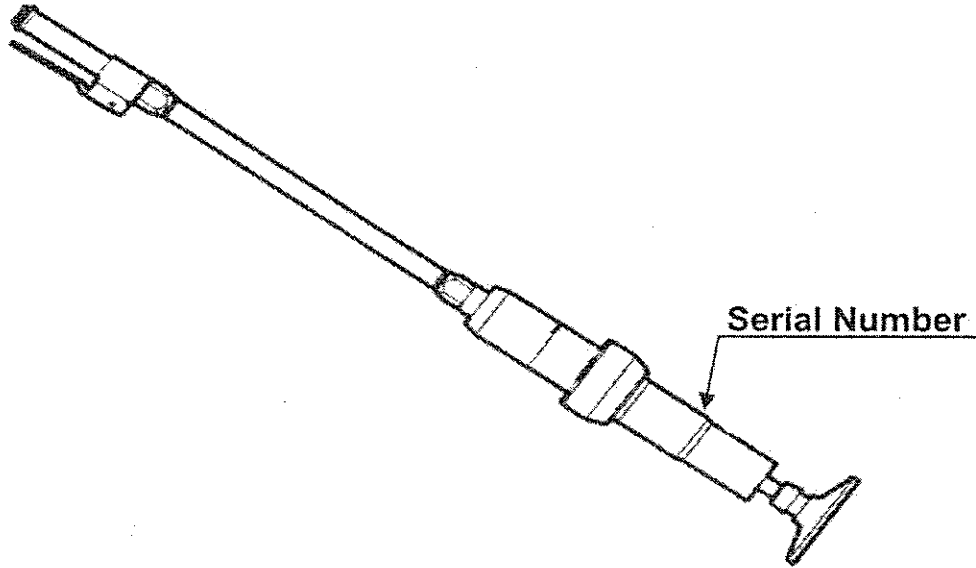
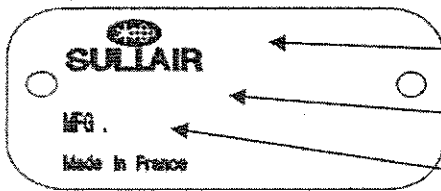


BACKFILL TAMPER - PRENSADORE - FOULOIR

MBT-6



| ENGLISH | ESPAGNOL | FRANCAIS | U | MBT-6 |
|-----------------|--------------------|--------------------|--------------|---------------|
| Weight | Peso | Poids | Lb / mm | 45.36 / 20.62 |
| Length | Longitud | Longueur | in / mm | 49.61/1260 |
| Bore | Escariado | Alésage | in / mm | 1.5 / 38 |
| Piston stroke | Carrera del piston | Course du piston | in / mm | 5.51 / 140 |
| B.P.M. | Golpes por minuto | Cadence de frappe | ops / min. | 500 |
| Pressure | Presion | Pression | PSI / Bar | 87 / 6 |
| Sleeve fitting | Enmangadura | Emmanchement | in / mm | |
| Air consumption | Consumo de aire | Consommation d'air | CFM / l/min. | 31.8 / 900 |



Part Number / Referencia / Référence

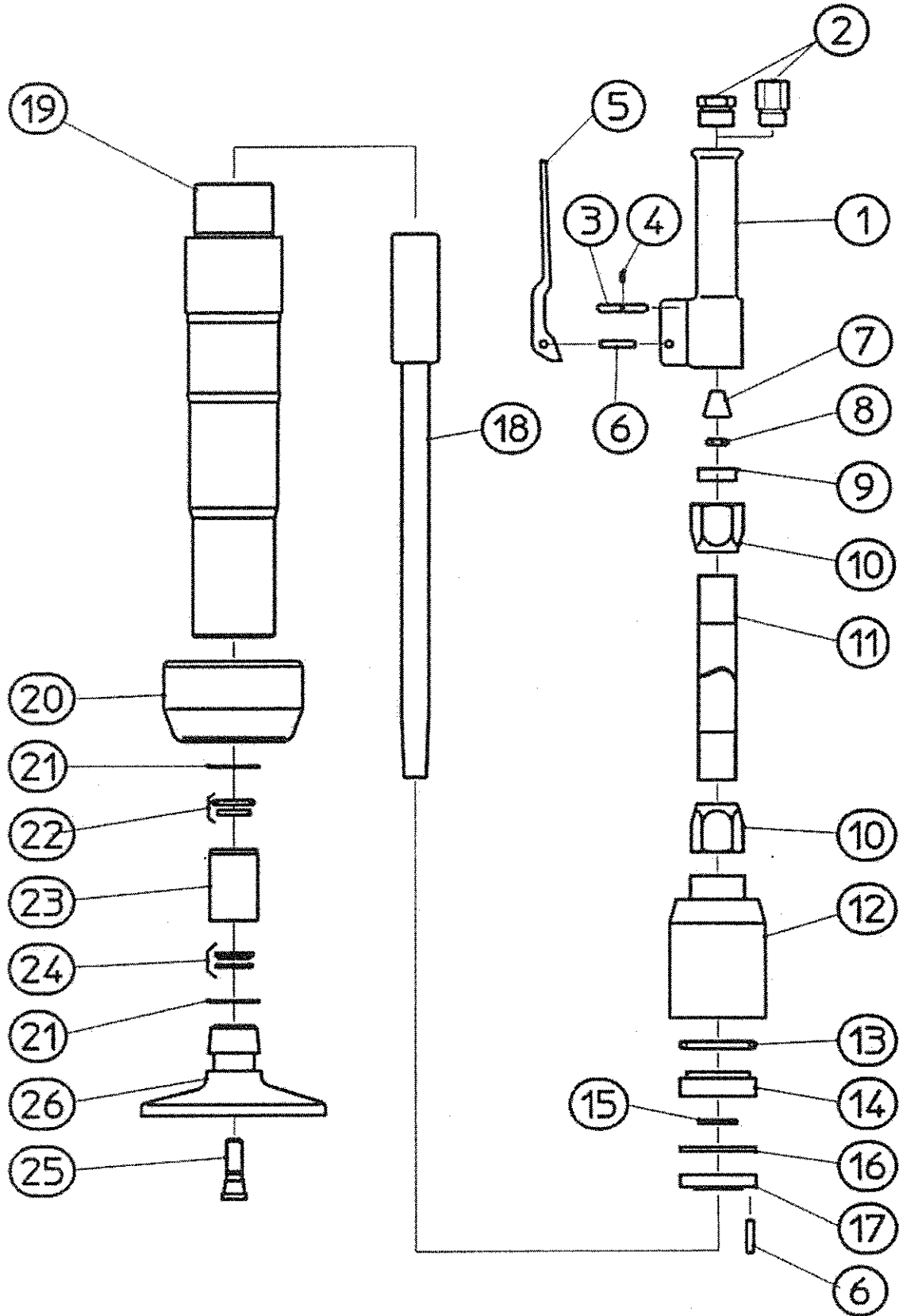
Description / Designation / Désignation

Serial Number / N° de Serie / N° de Série

Réf. 68724211
UPDATE : 2003, Oct 15



MBT-6 ILLUSTRATION



CROWDER SUPPLY CO, INC. - 8495 ROSLYN ST. - COMMERCE CITY, CO 80022 - TOLL FREE 888-883-5144 - www.crowdersupply.com

| REP | ITEM | Qty | ENGLISH | ESPAGNOL | FRANCAIS |
|-----|-----------|-----|---------------------------------|----------------------|-----------------------|
| 1 | 68722626 | 1 | -Handle, Throttle Bare | -Empunadura | -Poignée |
| 2 | 68722274 | 1 | -Bushing, Air Inlet 3/8 FNPT | -Racor 3/8 FNPT | - Mamelon 3/8 FNPT |
| 2 | 68722224 | 1 | -Bushing, Air Inlet 7/8-24 Thrd | -Racor 7/8-24 | - Mamelon 7/8-24 |
| 3 | 68722624 | 1 | Pin, Push Throttle Valve | -Vastago | -Poussoir |
| 4 | 68520851 | 1 | O-Ring, Push Pin | Junta | Joint |
| 5 | 68722627 | 1 | Lever, Throttle Valve | -Gatillo | -Gachette |
| 6 | 68723013 | 2 | Pin | Eje | Goupille |
| 7 | 68721468 | 1 | Valve, Throttle | -Motovolquete | -Basculeur |
| 8 | 68CJ 0181 | 1 | O-Ring | -Junta | -Joint |
| 9 | 68722621 | 1 | Seat, Throttle Valve | -Asiento | Siège |
| 10 | 68722622 | 2 | Nut, Lock Connecting Pipe | -Tuerca | -Ecrou |
| 11 | 68722623 | 1 | Pipe, connecting | Tubo | Manche |
| 12 | 68722615 | 1 | Head, Cylinder | Caja de distribucion | Boîte de distribution |
| 13 | 68CJ 0032 | 1 | O-Ring, Valve Seat | -Junta | -Joint |
| 14 | 68722617 | 1 | Seat, Valve Upper | -Asiento | -Siège de relève |
| 15 | 68ML 3024 | 1 | -Disc, Valve | -Pastiglia | -Pastille |
| 16 | 68722619 | 1 | -Guide, Valve | -Placa | -Plaque d'épaisseur |
| 17 | 68722616 | 1 | Seat, Valve Lower | -Asiento | -Siège de frappe |
| 18 | 68722614 | 1 | Piston | Embolo | Piston |
| 19 | 68722613 | 1 | Cylinder | Cilindro | Cylindre |
| 20 | 68722600 | 1 | Deflector, Exhaust | Carter | Carter d'air |
| 21 | 68524214 | 2 | Ring, Snap | Circlips | Circlips |
| 22 | 68524215 | 1 | Seal, Dust Upper | -Junta | -Joint |
| 23 | 68722618 | 1 | Bushing, Piston Guide | Casquillo | Douille |
| 24 | 68524216 | 1 | Seal, Dust Lower | -Junta | -Joint |
| 25 | 68722620 | 1 | Screw, Butt Clamp | -Tornillo | -Vis |
| 26 | 68722625 | 1 | Butt, Steel 6" Diameter | Pilette | Pilette |

■ recommended parts for your stock

■ Piezas aconsejadas para vestro stock

■ pièces recommandées pour votre stock



MBT-6