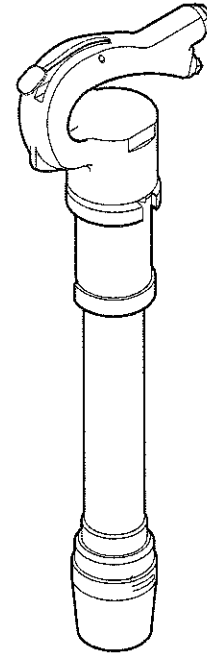




**Chicago
Pneumatic**

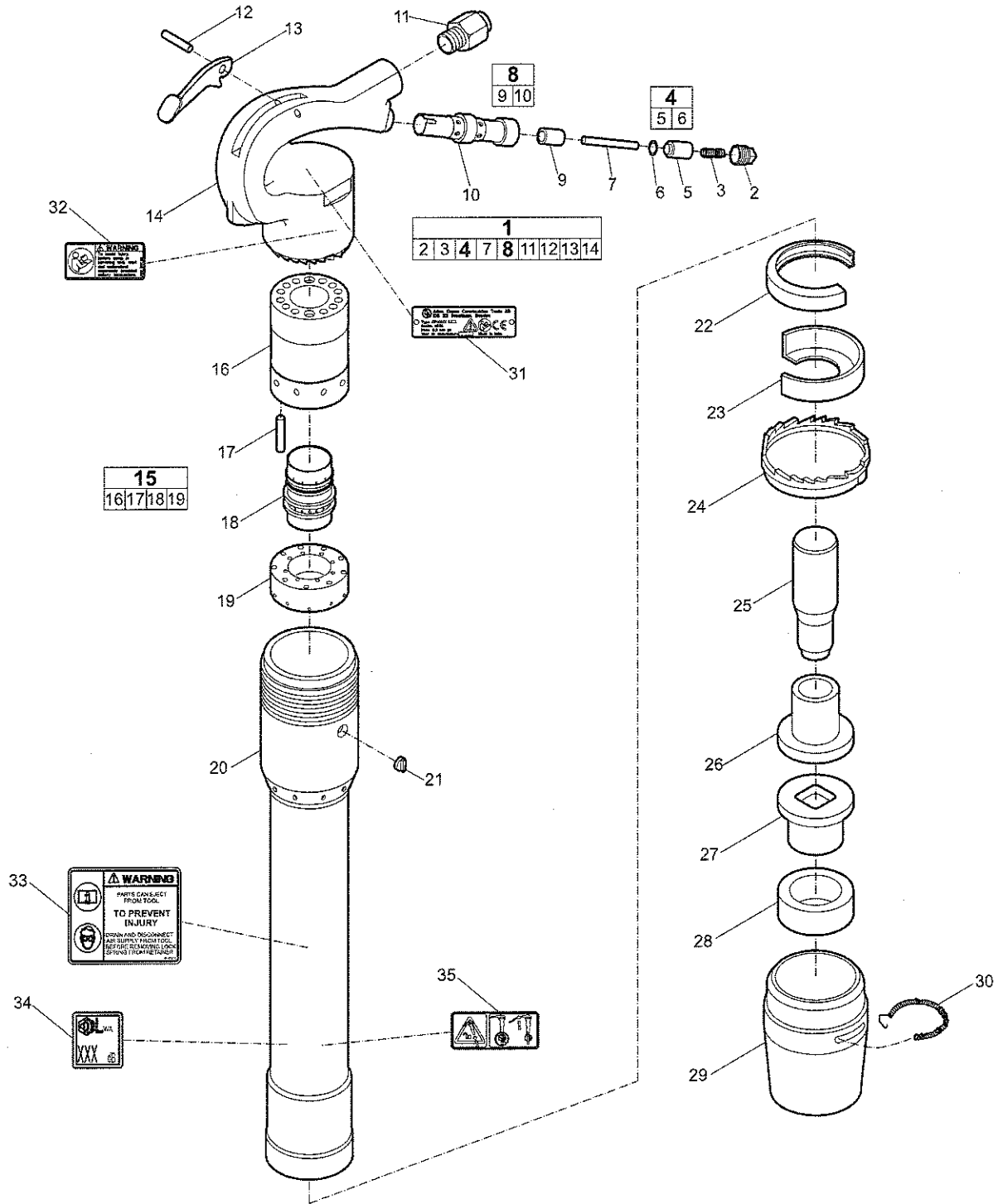
Spare parts list

**Handheld pneumatic rivet busters
CP 4608 P, CP 4611 P, CP 4608 D, CP 4611 D**



Spare parts list

CP 4608 P

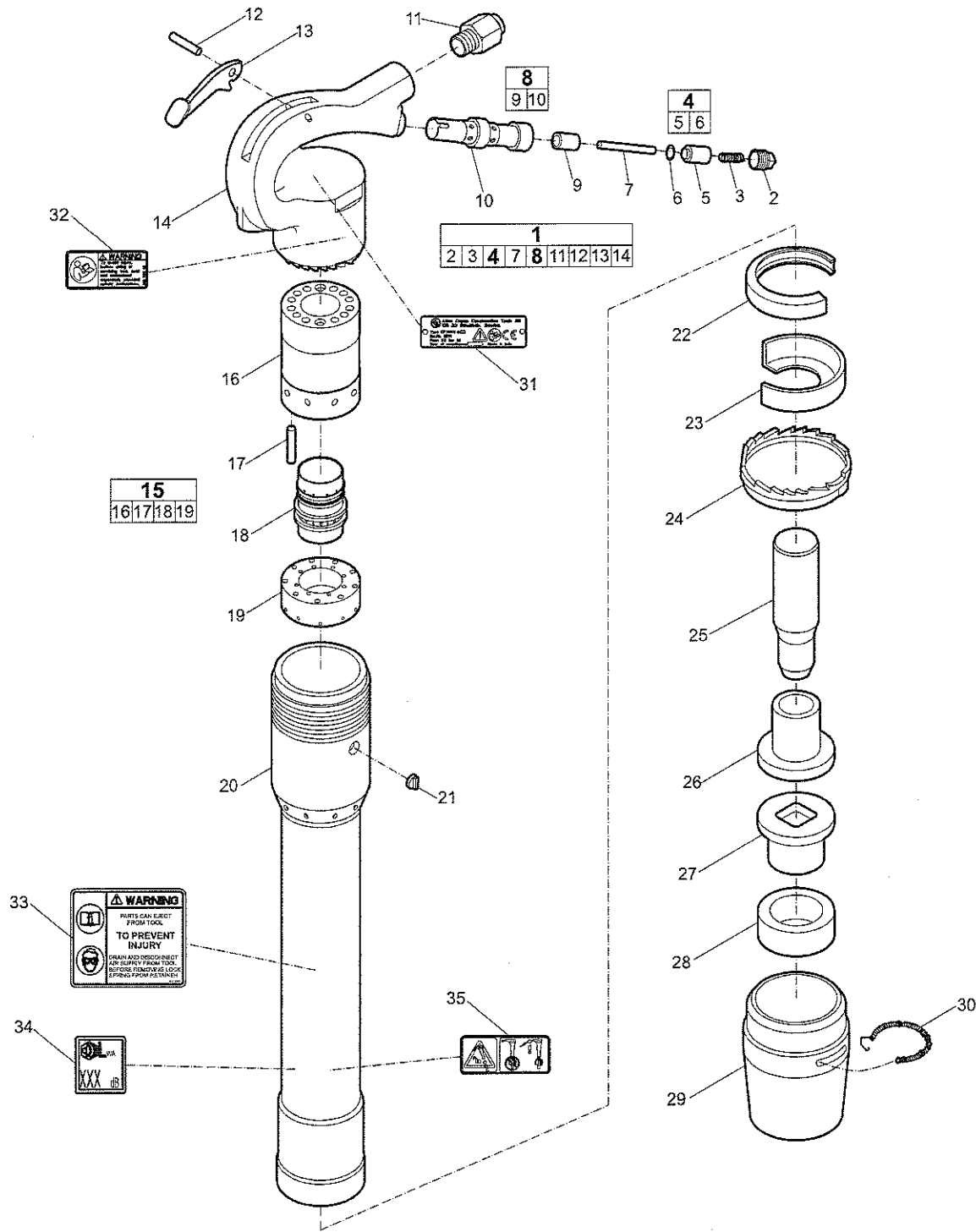


Crowder Supply Co., Inc. 8495 Roslyn St Commerce City, CO 80022 (303) 433-5144 FAX: (303) 433-3928 Toll Free: (888) 883-5144 www.crowdersupply.com

| No. | Description | Remark | Quantity | Part number |
|--------------------|----------------------------|-------------------------|----------|--------------|
| 1(2-3,4,7,8,11-14) | Handle, complete | | 1 | P007164 |
| 2 | Plug - Valve tube | | 1 | P001873 |
| 3 | Spring - Valve | | 1 | P001853 |
| 4(5-6) | Valve - Throttle, complete | | 1 | P001799 |
| 5 | Valve - Throttle | | 1 | - |
| 6 | O-ring | | 1 | P083071 |
| 7 | Pin - Push | Valve | 1 | P004834 |
| 8(9-10) | Tube - Throttle, complete | | 1 | P007325 |
| 9 | Bushing | | 1 | P004839 |
| 10 | Tube - Throttle | | 1 | - |
| 11 | Bushing - Air inlet | ½" NPTF (With strainer) | 1 | P001995 |
| 12 | Pin - Lever | | 1 | P001915 |
| 13 | Lever - Throttle | | 1 | P001982 |
| 14 | Handle | | 1 | - |
| 15(16-19) | Valve, complete | | 1 | P007385 |
| 16 | Case - Valve | | 1 | P006319 |
| 17 | Dowel | | 1 | 3303 0050 86 |
| 18 | Valve | | 1 | P001538 |
| 19 | Lid - Valve case | | 1 | P006320 |
| 20 | Cylinder | | 1 | - |
| 21 | Key - Lock collar | | 1 | P001430 |
| 22 | Clip - Spring | Lock collar | 1 | P001355 |
| 23 | Deflector - Exhaust | | 1 | P001389 |
| 24 | Collar - Lock | | 1 | P001399 |
| 25 | Piston | 8" Stroke | 1 | 3303 0050 94 |
| 26 | Sleeve - Upper | | 1 | P156988 |
| 27 | Sleeve - Lower | | 1 | P072333 |
| 28 | Bumper | | 1 | 3303 0051 03 |
| 29 | Sleeve - Retainer | | 1 | P071849 |
| 30 | Spring - Lock | | 1 | P073942 |
| 31 | Data Plate | | 1 | - |
| 32 | Safety label | | 1 | 3310 1602 00 |
| 33 | Warning label | | 1 | P157290 |
| 34 | Noise level label | | 1 | - |
| 35 | Eject warning label | | 1 | 3310 1572 00 |

Crowder Supply Co., Inc. 8495 Roslyn St Commerce City, CO 80022 (303) 433-5144 FAX: (303) 433-3928 Toll Free: (888) 883-5144 www.crowdersupply.com

CP 4611 P

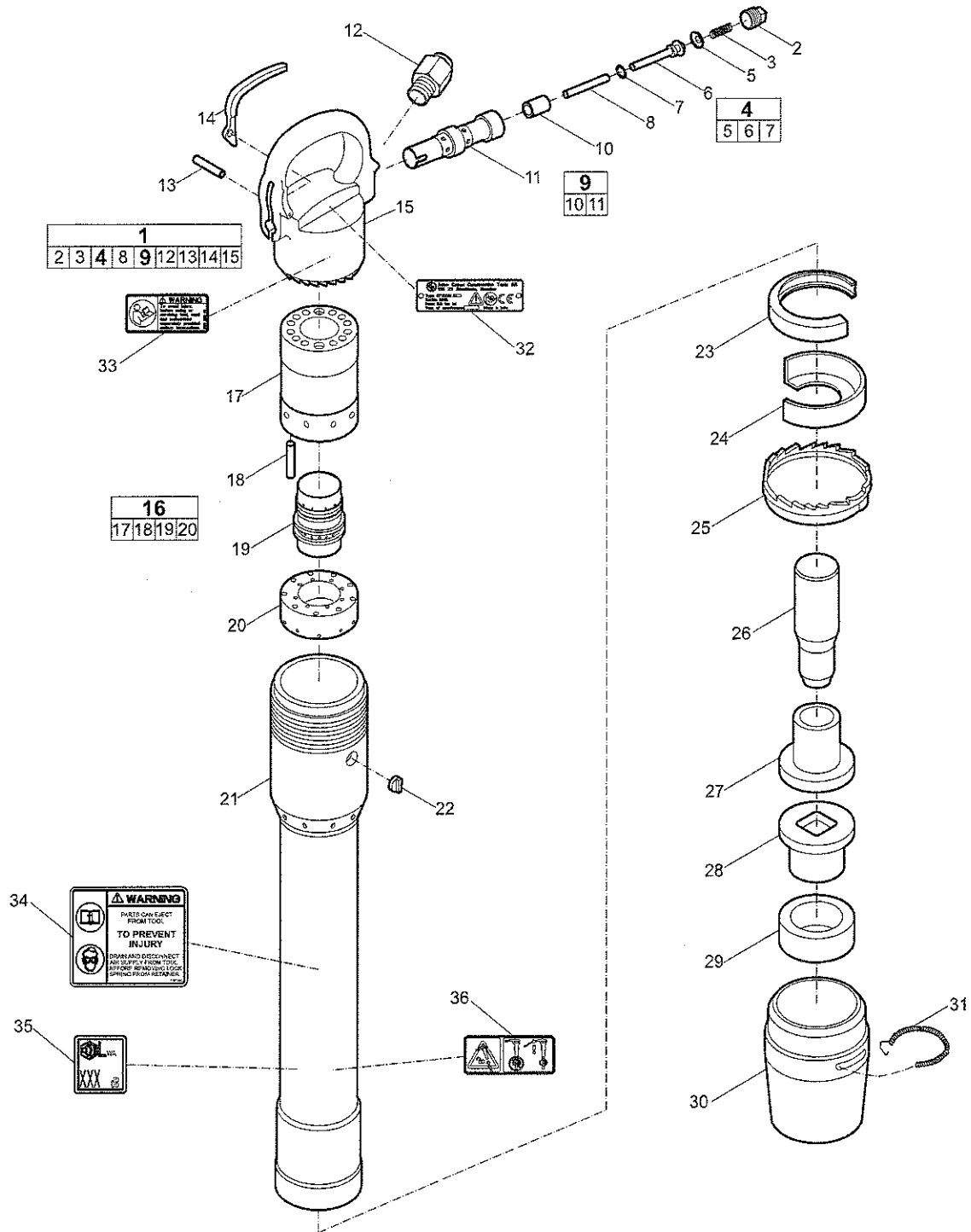


Crowder Supply Co, Inc. 8495 Roslyn St Commerce City, CO 80022 (303) 433-5144 FAX: (303) 433-3928 Toll Free: (888) 883-5144 www.crowdersupply.com

| No. | Description | Remark | Quantity | Part number |
|--------------------|----------------------------|-------------------------|----------|--------------|
| 1(2-3,4,7,8,11-14) | Handle, complete | | 1 | P007164 |
| 2 | Plug - Valve tube | | 1 | P001873 |
| 3 | Spring - Valve | | 1 | P001853 |
| 4(5-6) | Valve - Throttle, complete | | 1 | P001799 |
| 5 | Valve - Throttle | | 1 | - |
| 6 | O-ring | | 1 | P083071 |
| 7 | Pin - Push | Valve | 1 | P004834 |
| 8(9-10) | Tube - Throttle, complete | | 1 | P007325 |
| 9 | Bushing | | 1 | P004839 |
| 10 | Tube - Throttle | | 1 | - |
| 11 | Bushing - Air inlet | ½" NPTF (With strainer) | 1 | P001995 |
| 12 | Pin - Lever | | 1 | P001915 |
| 13 | Lever - Throttle | | 1 | P001982 |
| 14 | Handle | | 1 | - |
| 15(16-19) | Valve, complete | | 1 | P007385 |
| 16 | Case - Valve | | 1 | P006319 |
| 17 | Dowel | | 1 | 3303 0050 86 |
| 18 | Valve | | 1 | P001538 |
| 19 | Lid - Valve case | | 1 | P006320 |
| 20 | Cylinder | | 1 | - |
| 21 | Key - Lock collar | | 1 | P001430 |
| 22 | Clip - Spring | Lock collar | 1 | P001355 |
| 23 | Deflector - Exhaust | | 1 | P001389 |
| 24 | Collar - Lock | | 1 | P001399 |
| 25 | Piston | 11" Stroke | 1 | 3303 0050 93 |
| 26 | Sleeve - Upper | | 1 | P156988 |
| 27 | Sleeve - Lower | | 1 | P072333 |
| 28 | Bumper | | 1 | 3303 0051 03 |
| 29 | Sleeve - Retainer | | 1 | P071849 |
| 30 | Spring - Lock | | 1 | P073942 |
| 31 | Data plate | | 1 | - |
| 32 | Safety label | | 1 | 3310 1602 00 |
| 33 | Warning label | | 1 | P157290 |
| 34 | Noise level label | | 1 | - |
| 35 | Eject warning label | | 1 | 3310 1572 00 |

Crowder Supply Co, Inc. 8495 Roslyn St Commerce City, CO 80022 (303) 433-5144 FAX: (303) 433-3928 Toll Free: (888) 883-5144 www.crowdersupply.com

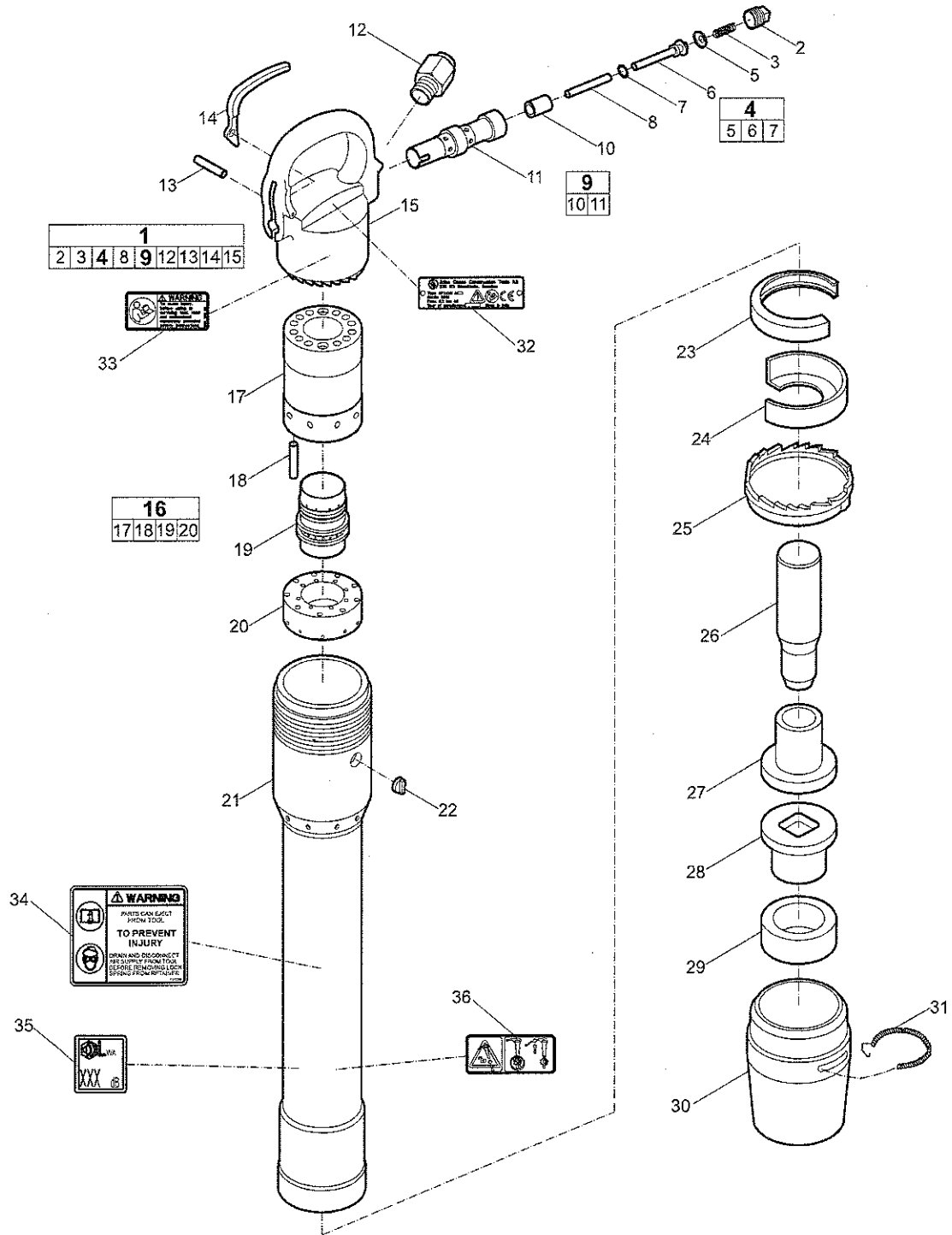
CP 4608 D



Crowder Supply Co., Inc. 8495 Roslyn St Commerce City, CO 80022 (303) 433-5144 FAX: (303) 433-3928 Toll Free: (888) 863-5144 www.crowdersupply.com

| No. | Description | Remark | Quantity | Part number |
|--------------------|----------------------------|-------------------------|----------|--------------|
| 1(2-3,4,8,9,12-15) | Handle, complete | | 1 | P007399 |
| 2 | Plug - Valve tube | | 1 | P001884 |
| 3 | Spring - Valve | | 1 | P001864 |
| 4(5-7) | Valve - Throttle, complete | | 1 | P005153 |
| 5 | Cap - O-ring | | 1 | P092091 |
| 6 | Valve - Throttle | | 1 | - |
| 7 | Throttle valve O-ring | | 1 | CA088867 |
| 8 | Pin - Push | Valve | 1 | P006138 |
| 9(10-11) | Tube - Throttle, complete | | 1 | P007846 |
| 10 | Bushing | | 1 | - |
| 11 | Tube Throttle | | 1 | - |
| 12 | Bushing air inlet | ½" NPTF (With strainer) | 1 | P001995 |
| 13 | Pin - Lever | | 1 | P005171 |
| 14 | Lever - Throttle | | 1 | P006137 |
| 15 | Handle | | 1 | - |
| 16(17-20) | Valve, complete | | 1 | P007385 |
| 17 | Case - Valve | | 1 | P006319 |
| 18 | Dowel | | 1 | 3303 0050 86 |
| 19 | Valve | | 1 | P001538 |
| 20 | Lid - Valve case | | 1 | P006320 |
| 21 | Cylinder | | 1 | - |
| 22 | Key - Lock collar | | 1 | P001430 |
| 23 | Clip - Spring | Lock collar | 1 | P001355 |
| 24 | Deflector - Exhaust | | 1 | P001389 |
| 25 | Collar - Lock | | 1 | P001399 |
| 26 | Piston | 8" Stroke | 1 | 3303 0050 94 |
| 27 | Sleeve - Upper | | 1 | P156988 |
| 28 | Sleeve - Lower | | 1 | P072333 |
| 29 | Bumper | | 1 | 3303 0051 03 |
| 30 | Sleeve - Retainer | | 1 | P071849 |
| 31 | Spring - Lock | | 1 | P073942 |
| 32 | Data plate | | 1 | - |
| 33 | Safety label | | 1 | 3310 1602 00 |
| 34 | Warning label | | 1 | P157290 |
| 35 | Noise level label | | 1 | - |
| 36 | Eject warning label | | 1 | 3310 1572 00 |

CP 4611 D



Crowder Supply Co. Inc. 8495 Roslyn St Commerce City, CO 80022 (303) 433-5144 FAX: (303) 433-3928 Toll Free: (888) 883-5144 www.crowdersupply.com

| No. | Description | Remark | Quantity | Part number |
|--------------------|----------------------------|-------------------------|----------|--------------|
| 1(2-3,4,8,9,12-15) | Handle, complete | | 1 | P007399 |
| 2 | Plug - Valve tube | | 1 | P001884 |
| 3 | Spring - Valve | | 1 | P001864 |
| 4(5-7) | Valve - Throttle, complete | | 1 | P005153 |
| 5 | Cap - O-ring | | 1 | P092091 |
| 6 | Valve - Throttle | | 1 | - |
| 7 | Throttle valve O-ring | | 1 | CA088867 |
| 8 | Pin - Push | Valve | 1 | P006138 |
| 9(10-11) | Tube - Throttle, complete | | 1 | P007846 |
| 10 | Bushing | | 1 | - |
| 11 | Tube Throttle | | 1 | - |
| 12 | Bushing air inlet | ½" NPTF (With strainer) | 1 | P001995 |
| 13 | Pin - Lever | | 1 | P005171 |
| 14 | Lever - Throttle | | 1 | P006137 |
| 15 | Handle | | 1 | - |
| 16(17-20) | Valve, complete | | 1 | P007385 |
| 17 | Case - Valve | | 1 | P006319 |
| 18 | Dowel | | 1 | 3303 0050 86 |
| 19 | Valve | | 1 | P001538 |
| 20 | Lid - Valve case | | 1 | P006320 |
| 21 | Cylinder | | 1 | - |
| 22 | Key - Lock collar | | 1 | P001430 |
| 23 | Clip - Spring | Lock collar | 1 | P001355 |
| 24 | Deflector - Exhaust | | 1 | P001389 |
| 25 | Collar - Lock | | 1 | P001399 |
| 26 | Piston | 11" Stroke | 1 | 3303 0050 93 |
| 27 | Sleeve - Upper | | 1 | P156988 |
| 28 | Sleeve - Lower | | 1 | P072333 |
| 29 | Bumper | | 1 | 3303 0051 03 |
| 30 | Sleeve - Retainer | | 1 | P071849 |
| 31 | Spring - Lock | | 1 | P073942 |
| 32 | Data plate | | 1 | - |
| 33 | Safety label | | 1 | 3310 1602 00 |
| 34 | Warning label | | 1 | P157290 |
| 35 | Noise level label | | 1 | - |
| 36 | Eject warning label | | 1 | 3310 1572 00 |

Crowder Supply Co, Inc. 8495 Roslyn St Commerce City, CO 80022 (303) 433-5144 FAX: (303) 433-3928 Toll Free: (888) 883-5144 www.crowdersupply.com

Accessories

Hose rolls

Metric

| Description | Inner diameter (mm) | Thickness (mm) | Maximum working pressure (bar) | Length of roll (m) | Weight (kg) | Part number |
|-----------------|---------------------|----------------|--------------------------------|--------------------|-------------|--------------|
| Red-X hose roll | 19 | 2.0 | 20 | 60 | 11 | 8900 0050 10 |
| Red-X hose roll | 19 | 2.0 | 20 | 100 | 18 | 8900 0050 11 |
| Red-X hose roll | 19 | 2.0 | 20 | 200 | 36 | 8900 0050 12 |
| Red-X hose roll | 25 | 2.5 | 20 | 60 | 15 | 8900 0050 20 |
| Red-X hose roll | 25 | 2.5 | 20 | 100 | 25 | 8900 0050 21 |
| Red-X hose roll | 25 | 2.5 | 20 | 200 | 50 | 8900 0050 22 |

Imperial

| Description | Inner diameter (in.) | Thickness (in.) | Maximum working pressure (psi) | Length of roll (ft) | Weight (lb) | Part number |
|-----------------|----------------------|-----------------|--------------------------------|---------------------|-------------|--------------|
| Red-X hose roll | ¾ | ¼ | 290 | 195 | 24.3 | 8900 0050 10 |
| Red-X hose roll | ¾ | ¼ | 290 | 325 | 39.7 | 8900 0050 11 |
| Red-X hose roll | ¾ | ¼ | 290 | 650 | 79.4 | 8900 0050 12 |
| Red-X hose roll | 1 | ⅜ | 290 | 195 | 33.1 | 8900 0050 20 |
| Red-X hose roll | 1 | ⅜ | 290 | 325 | 55.1 | 8900 0050 21 |
| Red-X hose roll | 1 | ⅜ | 290 | 650 | 110.2 | 8900 0050 22 |

Pre-mounted universal hoses with claw couplings

Metric

| Description | Inner diameter (mm) | Thickness (mm) | Maximum working pressure (bar) | Length of roll (m) | Weight (kg) | Part number |
|----------------------|---------------------|----------------|--------------------------------|--------------------|-------------|--------------|
| Red-X universal hose | 19 | 2.0 | 20 | 20 | 4.5 | 8900 0050 09 |
| Red-X universal hose | 25 | 2.5 | 20 | 20 | 6.0 | 8900 0050 23 |

Imperial

| Description | Inner diameter (in.) | Thickness (in.) | Maximum working pressure (psi) | Length of roll (ft) | Weight (lb) | Part number |
|----------------------|----------------------|-----------------|--------------------------------|---------------------|-------------|--------------|
| Red-X universal hose | ¾ | ¼ | 290 | 50 | 8.8 | 8900 0050 08 |
| Red-X universal hose | 1 | ⅜ | 290 | 50 | 11.0 | 8900 0050 24 |

Water separator

Metric

| Description | Hose connection (mm) | Air flow (l/s) | Weight (kg) | Part number |
|----------------------------|----------------------|----------------|-------------|--------------|
| Water separator (3/4" BSP) | 20 | 61 | 0.8 | 8900 0050 00 |

Imperial

| Description | Hose connection (in.) | Air flow (foot ³ /min) | Weight (lb) | Part number |
|----------------------------|-----------------------|-----------------------------------|-------------|--------------|
| Water separator (3/4" NPT) | 3/4 | 130 | 1.8 | 8900 0050 01 |

Lubricator

Metric

| Description | Hose connection (mm) | Air flow (l/s) | Oil volume (l) | Weight (kg) | Part number |
|--------------------------|----------------------|----------------|----------------|-------------|--------------|
| Lubricator 1300 (1" BSP) | 25 | 15-140 | 1.3 | 3 | 8900 0050 02 |

Imperial

| Description | Hose connection (in.) | Air flow (foot ³ /min) | Oil volume (US gallon) | Weight (lb) | Part number |
|------------------------|-----------------------|-----------------------------------|------------------------|-------------|--------------|
| Lubricator 43 (1" NPT) | 1 | 32-300 | 0.34 | 6.6 | 8900 0050 07 |

CP Airolene Plus Tool Oil

Metric

| Description | Oil volume (l) | Part number |
|-------------------|----------------|--------------|
| 5 l container | 5 | 8099 0202 49 |
| 4 x 5 l container | 20 | 8099 0202 51 |

Imperial

| Description | Oil volume (US gallon) | Part number |
|------------------------------|------------------------|--------------|
| 1.32 US gallon container | 1.32 | 8099 0202 49 |
| 4 x 1.32 US gallon container | 5.28 | 8099 0202 51 |

Crowder Supply Co, Inc. 8495 Roslyn St Commerce City, CO 80022 (303) 433-5144 FAX: (303) 433-3928 Toll Free: (888) 883-5144 www.crowdersupply.com