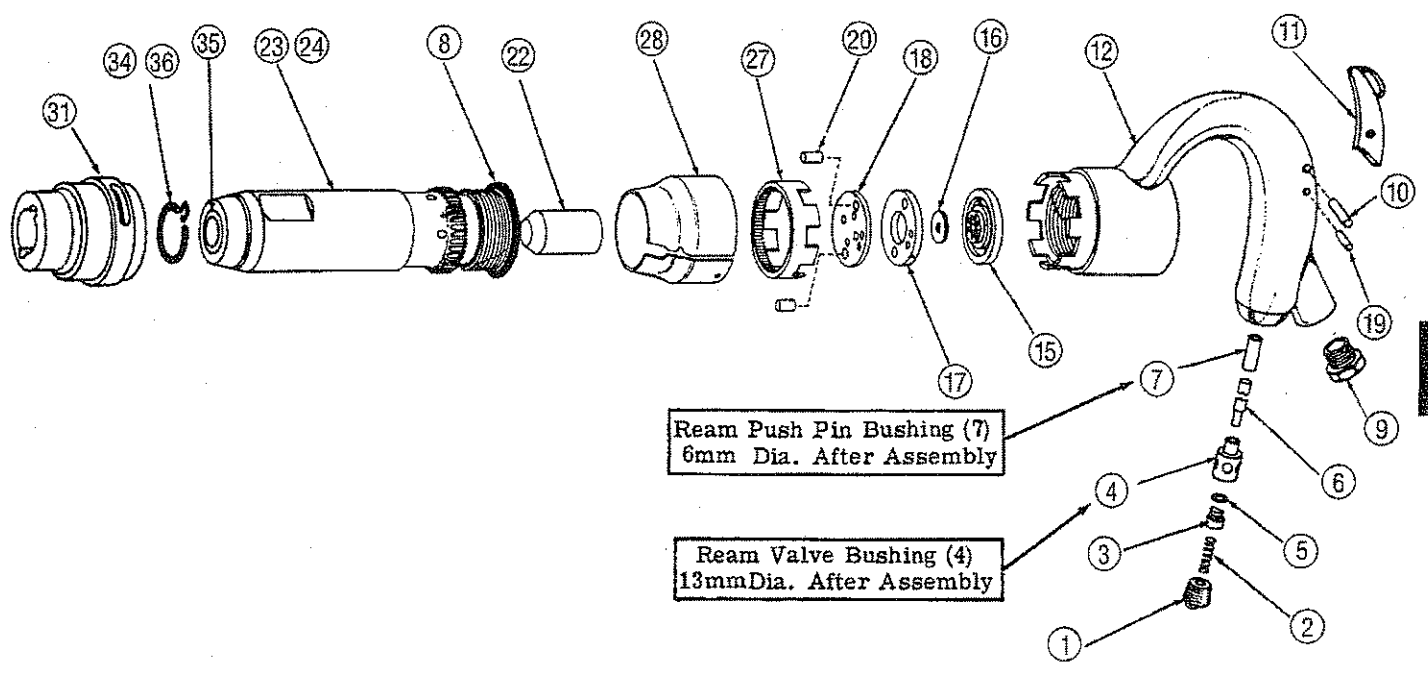


# MODEL CP-9362, 9363, 9364

# CHICAGO PNEUMATIC TOOLS

## CHIPPING HAMMER



SYM. NO.	PART NO.	CONTINENTAL NO.	DESCRIPTION	AMT. REQ.
1	TP-124849	6119	Plug-Throttle Valve	1
2	TP-124850	6116	Spring-Throttle Valve	1
3	TP-124851	6114	Valve-Throttle (Including: No.5)	1
4	TP-124852	6115	Bushing-Throttle Valve	1
5	TP-124853	6113	O-Ring	1
6	TP-124854	6109	Pin-Push	1
7	TP-124855	6110	Bushing-Push Pin	1
8	H-082662	6102	O-Ring (-224)	1
9	TP-124856	6136	Bushing-Permanent	1
10	TP-124857	6118-B	Pin-Throttle Lever	1
11	TP-124858	6117	Lever-Throttle	1
12	TP-124859	6111	Handle (Including: No. 4, 7 & 9)	1
15	TP-124860	6105	Lid-Upper Valve Case	1
16	TP-124861	6104	Valve	1
17	TP-124862	6107	Case-Valve	1
18	TP-124863	6106	Lid-Lower Valve Case	1
19	TP-124864	6118-A	Pin-Stop	1
20	TP-124865	6108	Pin-Dowel	2
22	TP-124866	6103-2	Piston (CP-9362)	1
	TP-124872	6103-3	Piston (CP-9363)	1
	TP-124874	6103-4	Piston (CP-9364)	1
23	TP-124867	6101-2	Cylinder (CP-9362)	1
	TP-124873	6101-3	Cylinder (CP-9363)	1
	TP-124875	6101-4	Cylinder (CP-9364)	1
24	TP-129577		Cylinder Assembly (Including: TP-124867 & TP-124885) (CP-9362) (Round)	1

SYM. NO.	PART NO.	CONTINENTAL NO.	DESCRIPTION	AMT. REQ.
	TP-129578		Cylinder Assembly (Including: TP-124867 & TP-125643) (CP-9362) (Hex)	1
	TP-129579		Cylinder Assembly (Including: TP-124873 & TP-124885) (CP-9363) (Round)	1
	TP-129580		Cylinder Assembly (Including: TP-124873 & TP-125643) (CP-9363) (Hex)	1
	TP-129581		Cylinder Assembly (Including: TP-124875 & TP-124885) (CP-9364) (Round)	1
	TP-129582		Cylinder Assembly (Including: TP-124875 & TP-125643) (CP-9364) (Hex)	1
27	TP-124868	6123	Clip-Lock	1
28	TP-124869	6122	Shield-Lock	1
31	TP-124870	9101	Sleeve-Retainer (Including: No.34)	1
34	P-070994	9105	Spring-Lockcoil	1
35	TP-124885	6144-R	Bushing-Cylinder (Round)	1
	TP-125643	6144-H	Bushing-Cylinder (Hex)	1
36	P-135246		Retainer-Polyurethane	1