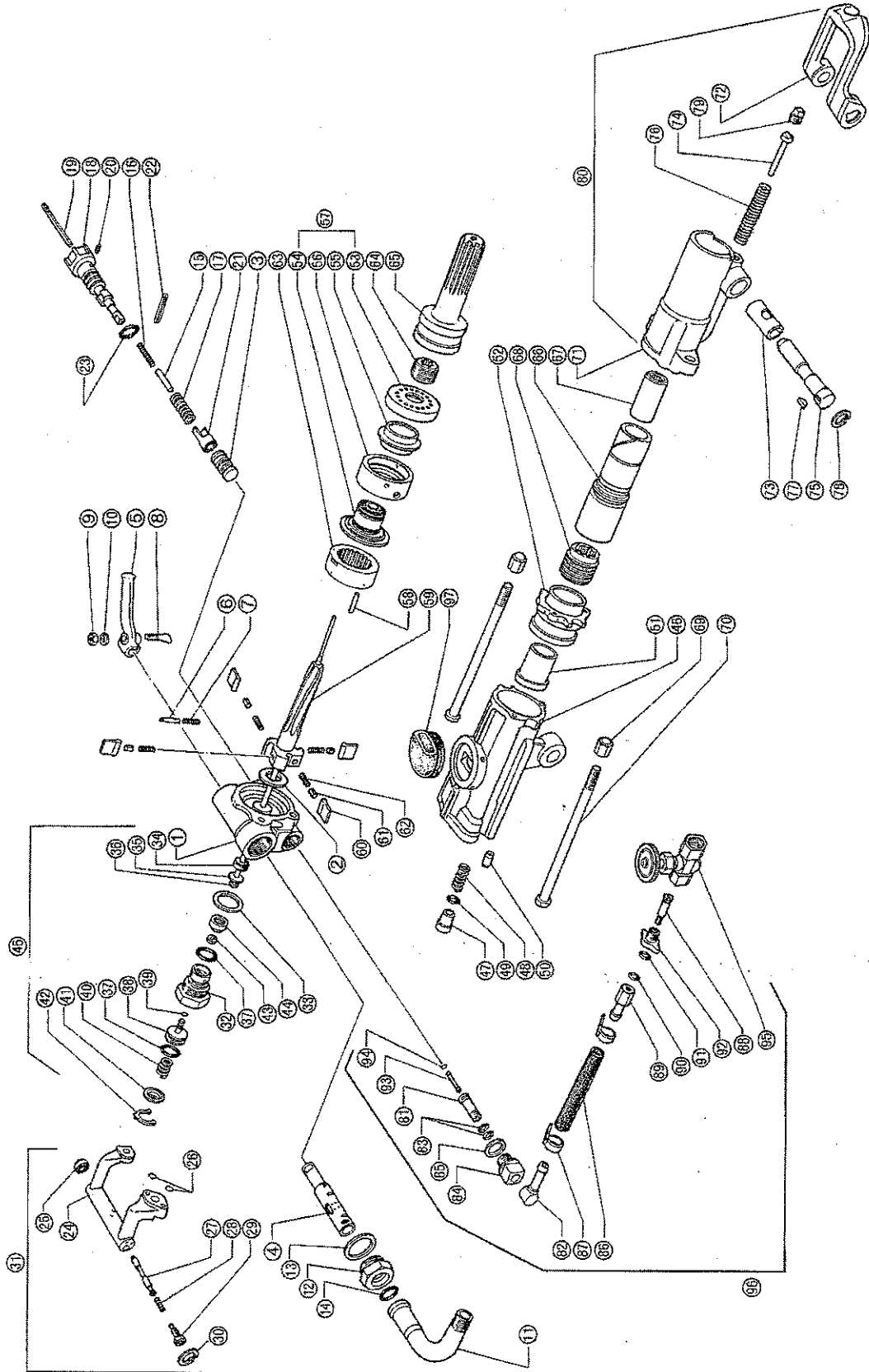


MODEL CLD-280

CONTINENTAL POWER TOOLS

FEED LEG DRILL

1



CONTINENTAL POWER TOOLS

MODEL CLD-280

FEED LEG DRILL

CROWDER SUPPLY CO., INC. - 8495 ROSLYN ST. - COMMERCE CITY, CO 80022 - TOLL FREE 888-883-5144 - www.crowdersupply.com

INDEX NO.	PART NO.	DESCRIPTION	QUAN. REQD.
1	7875-02-0100	Back Head Assy (incl. 7825-01-015A, 7897-82-003A)	1
2	7825-01-0150	Back Head Washer	1
3	7897-82-0030	Control Valve Bushing	1
4	7825-01-0020	Throttle Valve	1
5	7825-01-0030	Throttle Valve Handle	1
6	7825-01-0040	Throttle Valve Plunger	1
7	7898-17-0110	Throttle Valve Spring	1
8	7825-01-0060	Throttle Valve Bolt	1
9	9913-23-5000	Hex. Nut	1
10	9920-13-5000	Spring Washer	1
11	7825-01-8080	Hose Connection Tube	1
12	7825-01-8090	Hose Connection Cap	1
13	7825-01-0110	Hose Connection Gasket	1
14	9954-80-0210	O-Ring 21	1
15	7897-82-0040	Feed Control Valve	1
16	7898-17-1330	Control Valve Spring	1
17	7898-17-0240	Valve Ratchet Spring	1
18	7831-01-6010	Control Valve Handle	1
19	7831-01-6020	Control Valve Screw	1
20	7897-82-0110	Control Valve Set Screw	1
21	7897-82-0120	Control Valve Ratchet	1
22	7897-82-0130	Control Valve Pin	1
23	9954-80-0180	O-Ring 18	1
24	7831-08-250J	Mono Block Handle Assy (incl. 7828-05-024B, 9954-80-0050[2])	1
25	7828-05-0240	Dust Seal	1
26	9954-80-0050	O-Ring 5	2
27	7825-08-0270	Release Valve	1
28	7898-17-0890	Release Valve Spring	1
29	7825-08-0290	Release Valve Retainer	1
30	9957-41-8000	Snap Ring	1
31	7831-08-0000	Mono Block Handle Gr.	1
32	7825-10-0310	Water Tube Gland	1
33	7825-10-0330	Tube Gland Gasket	1
34	7825-10-0340	Tube Gasket	1
35	7825-10-0350	Tube Washer	1
36	7841-10-0360	Water Tube	1
37	9954-80-0180	O-Ring 18	2
38	7825-10-0320	Water Valve Piston	1
39	9954-80-0030	O-Ring 3	1
40	7898-17-0260	Water Valve Spring	1
41	7825-10-0380	Valve Spring Retainer	1
42	7825-10-0390	Water Valve Retainer Ring	1
43	7825-10-0410	Water Valve Seat	1
44	7825-10-0420	Water Valve Seat Retainer	1
45	7825-10-0000	Water Tube Gr.	1
46	7831-20-050E	Cylinder	1
47	7825-20-0630	Blow Air Connection	1
48	7898-17-0220	Blow Air Connection Spring	1
49	9954-80-0120	O-Ring 12	1
50	7825-20-0650	Feed Air Connection	1
51	7827-20-0680	Front Washer Bearing	1
52	7831-20-069B	Front Washer	1
53	7840-30-0710	Valve Chest Cover	1
54	7840-30-0720	Valve Guide	1
55	7830-30-0730	Valve	1

INDEX NO.	PART NO.	DESCRIPTION	QUAN. REQD.
56	7840-30-0750	Valve Chest	1
57	7840-31-0000	Valve Gr.	1
58	7825-42-0810	Valve Key	1
59	7831-42-3820	Rifle Bar	1
60	7825-42-0830	Rotation Pawl	4
61	7828-40-0840	Pawl Plunger	4
62	7898-17-0840	Pawl Spring	4
63	7840-42-0860	Rotation Ratchet	1
64	7825-52-1010	Rifle Nut	1
65	7841-52-3030	Piston	1
66	7831-61-4140	Rotation Sleeve	1
67	7848-61-515D	Sleeve Bushing (7/8" x 4-1/4")	1
	7848-63-515D	Sleeve Bushing (1" x 4-1/4")	1
68	7875-60-113C	Sleeve Nut	1
69	7825-70-1210	Cap Nut	2
70	7831-70-1230	Through Bolt	2
71	7827-81-2400	Front Head	1
72	7827-81-2320	Steel Holder (7/8" x 4-1/4")	1
	7827-83-2320	Steel Holder (1" x 4-1/4")	1
73	7827-81-2390	Front Head Bushing	1
74	7827-81-2330	Steel Holder Plunger	1
75	7827-91-234A	Steel Holder Pin	1
76	7898-17-1300	Steel Holder Spring	1
77	7827-81-2350	Key	1
78	9957-43-0000	Retaining Ring	1
79	7827-81-2200	Plug Assy. (incl. 7825-91-0170[3])	1
80	7827-81-2000	Front Head Gr.	1
81	7896-02-5310	Water Connection Tube, I	1
82	7896-01-0330	Water Connection Tube, II	1
83	9954-80-0100	O-Ring 10	2
84	7896-01-0320	Water Connection Nut	1
85	7825-02-0140	Set Screw Gasket	1
86	7898-07-4010	Water Hose	1
87	7896-01-0040	Hose Clamp Band	2
88	7896-02-5350	Water Hose Stem, I	1
89		Water Hose Stem, II	1
90	9954-81-0520	O-Ring 10520	1
91	9954-10-0901	O-Ring 901	1
92		Water Hose Stem Cap	1
93	7896-01-0100	Water Connection Screen	1
94	9954-80-0050	O-Ring 5	1
95	7896-01-020B	Water Valve Assy.	1
96	7896-02-5000	Water Hose Connection Gr.	1
97		Exhaust Deflector	1