

**PARTS LIST FOR**

**HYDRAULIC POWER UNITS**  
(01-02-03)  
**AND**

**PRESSURE-MATIC VALVE**  
(06-300)

**NOTE: ALWAYS INDICATE PART NUMBER WHEN ORDERING PARTS.**

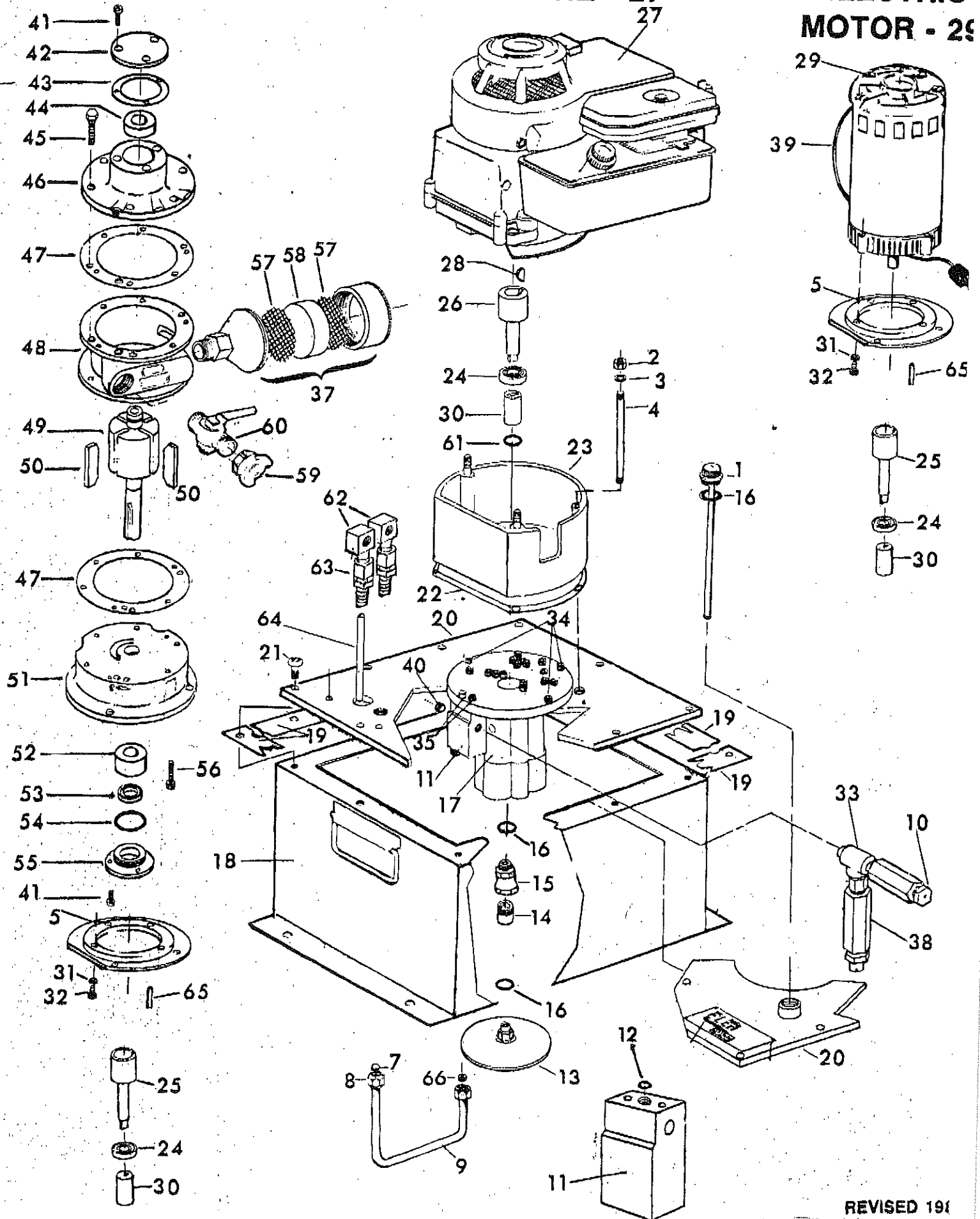
**ALWAYS INDICATE THE SERIAL NUMBER OF THE CYLINDER OR PUMP WHEN ORDERING PARTS OR CORRESPONDING.**

**SEE CURRENT PRICE LIST FOR PRICES AND SHIPPING WEIGHTS.**

# AIR MOTOR - 36

# GAS ENGINE - 27

# ELECTRIC MOTOR - 29



# \* incl. in #600 Air Motor

## PARTS FOR HYDRAULIC POWER UNITS

Item	Part No.	DESCRIPTION	No. Req.
1	501	Dip Stick	1
2	504	Nut	3
3	505	Lock Washer	3
4	508	Stud	3
5	507	Flange Adapter A/M or E/M	1
7	512	Sleeve (Rim)	2
8	513	Nut	2
9	514	Oil Line	1
10	515	Relief Valve 10,000 PSI	1
11	518	Check Block	1
12	518A	O-Ring	1
13	517B	Filter Assembly	1
14	519	Filter Extension	1
15	519	Adapter	1
16	520	O-Ring	1
17	521	Basic Pump	1
18	522	Reservoir 5 U.S. Gallons	1
19	523	Gasket, 4 piece	1
20	524	Cover Plate	1
21	545	Screw	10
22	546	Gasket	1
23	547	Adapter	1
24	548	Bearing	1
25	550AE	Shaft Adapter, 3/8", Air & Electric	1
25	550G	Shaft Adapter, 7/8", Gas Engine	1
27	660	Gas Engine, 3.5 Hp. B/S	1
28	662	Woodruff Key	1
29	680	Electric Motor, 1 1/2 Hp., 110/220V	1
30	551	Drive Coupler	1
31	303	Lock Washer	2

Castings Items #46, 48 and 51 are NOT AVAILABLE. Must purchase whole new Air Motor.

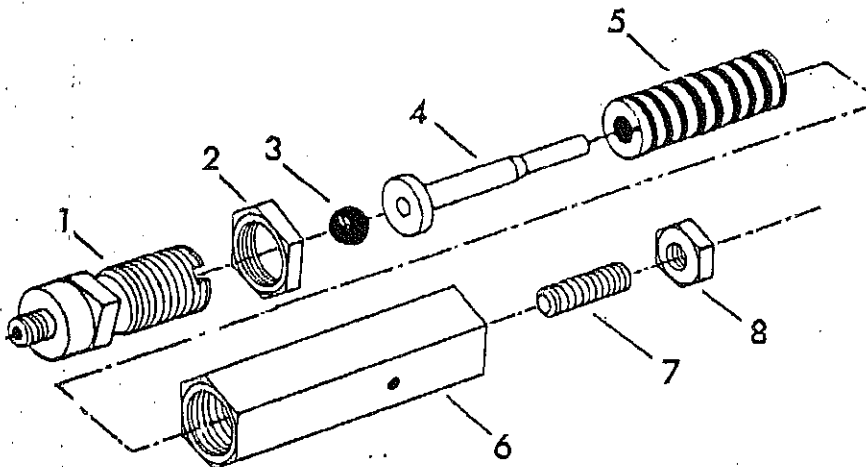
\*An Air Motor Repair Kit can be ordered by indicating Part No. 07-9. Kit consists of part numbers 604 (4), 607 (1), 608 (1), 611 (1), 613 (2), 615 (1), 617 (1), 620 (1). (State Model No.) Parts shown on drawings.

\*\*See Item 38 on Back Page

Item	Part No.	DESCRIPTION	No. Req.
32	703	Head Hex Cap Screw	4
33	744	Tee	1
34	708A	Socket Head Screw	3
35	708B	Socket Head Cap Screw	2
36	600	Air Motor, 3 Hp. Complete	1
37	619	Muffler Assembly	1
38	08-300	Pressure-Matic Valve Assembly**	1
39	683	Cord, 9 Feet, for E/M	1
40	552	Plug	1
41	601	Phillips Head Cap Screw	X 3
42	602	Dead End Bearing Cover	X 1
43	617	End Cap Gasket*	X 1
44	608	Dead End Bearing*	X 1
45	603	Hex Head Cap Screw	A 6
46	---	Dead End Casting-NOT AVAILABLE	A -
47	613	Body Gasket*	X 2
48	---	Body Casting-NOT AVAILABLE	A -
49	616	Rotor Assembly	A 1
50	604	Vane*	X 4
51	---	Drive End Casting-NOT AVAILABLE	A -
52	607	Drive End Bearing*	X 1
53	611	Seal (Shaft)*	A 1
54	615	O-Ring*	A 1
55	629	Drive End Bearing Cover	A 1
56	624	Socket Head Cap Screw	X 6
57	621	Screen	A 2
58	620	Felt Disk*	X 1
59	422	Air Coupler, 3/4"	1
60	419	Air Valve, 3/4" with Restrictor	1
61	558	O-Ring	1
62	559	Street Elbow	2
63	560	Bulkhead Connection	2
64	561	Drain Line	1
65	739	Key	1
66	---	Sleeve & Nut included with Part #560	--

**PARTS LIST**  
**PRESSURE-MATIC VALVE**  
**06-300**

*The 06-300 pressure-matic valve is factory set to operate the hydraulic cylinder at 7100 PSI. Do not adjust to any higher setting than 7100 PSI.*



Item No.	Part No.	Description	No Req.
1	0660	Valve Seat.....	1
2	0667	Housing Lock Nut .....	1
3	0661	Ball.....	1
4	0666	Valve Stem.....	1
5	0662	Spring .....	1
6	0665	Valve Housing .....	1
7	0663	Set Screw.....	1
8	0664	Lock Nut .....	1

**PRESSURE ADJUSTMENT PROCEDURE**  
**#06-300 PRESSURE-MATIC VALVE**

(Refer to exploded view)

- 1) Remove reservoir cover plate screws and tip cover plate so you have access to the valve.
- 2) Loosen Housing Lock Nut (#2). Turn Valve Housing (#6) clockwise to increase pressure and counterclockwise to decrease pressure.
- 3) Loosen Lock Nut (#8). Turn Set Screw (#7) until it touches the end of Valve Stem (#4). Back off Set Screw (#7) ~~1/8 turn~~ *1/8 turn*.
- 4) Tighten Lock Nuts (#2) and (#8)
- 5) Recheck pressure and install cover plate.