

# MODEL KJR-1-2-3-4

# KENT AIR TOOLS

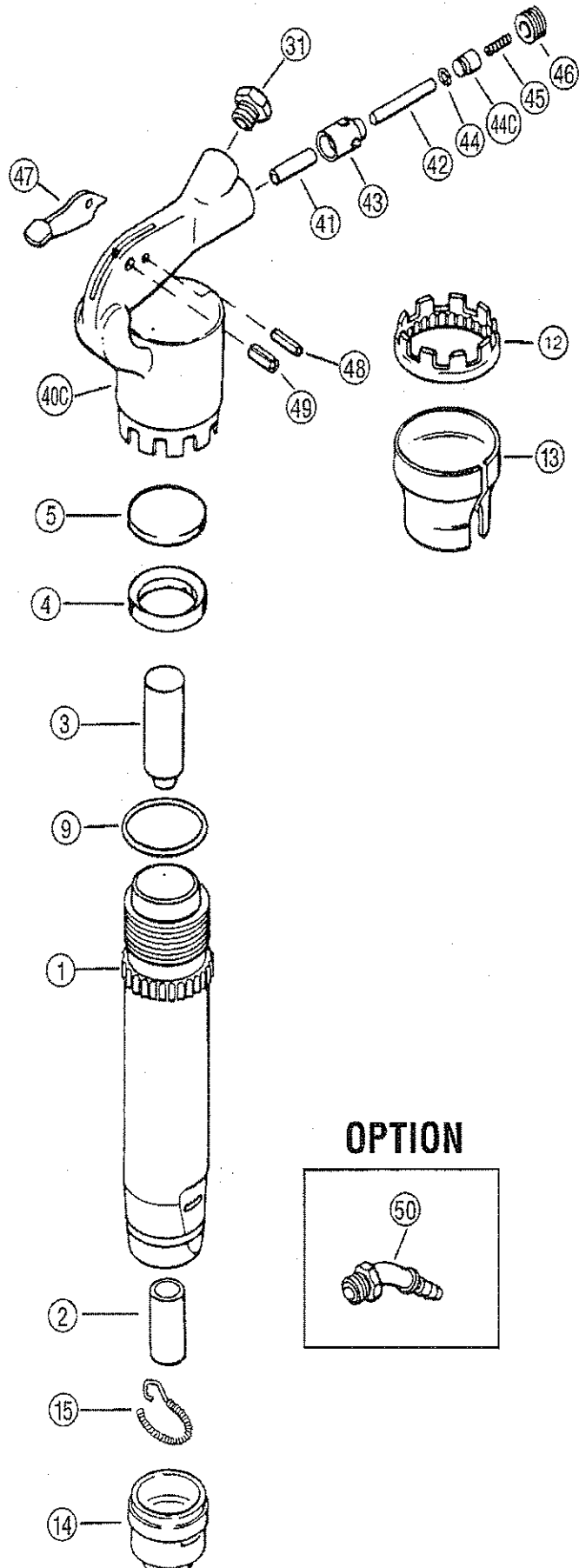
## CHIPPING HAMMER

CROWDER SUPPLY CO., INC. - 8495 ROSLYN ST. - COMMERCE CITY, CO 80022 - TOLL FREE 888-883-5144 - www.crowdersupply.com

SYM. NO.	PART NO.	CONTINENTAL NO.	DESCRIPTION	AMT. REQ.
<b>CYLINDER</b>				
1	4181	<b>6148-1</b>	Barrel - Model 1	1
	4182	<b>6148-2</b>	Barrel - Model 2	1
	4183	<b>6148-3</b>	Barrel - Model 3	1
	4184	<b>6148-4</b>	Barrel - Model 4	1
*2	4165	<b>6144-R</b>	Bushing for .680 Round Shank (Sub 2419)	1
	4170	<b>6144-H</b>	Bushing for .580 Hex. Shank (Sub 2418)	1
3	4174	<b>6103-1</b>	Piston Hammer - Model 1	1
	4175	<b>6103-2</b>	Piston Hammer - Model 2	1
	4176	<b>6103-3</b>	Piston Hammer - Model 3	1
	4177	<b>6103-4</b>	Piston Hammer - Model 4	1
4	4186	<b>6147</b>	Ring Valve	1
5	4185	<b>6146</b>	Valve Seat	1
9	4179	<b>6102</b>	Barrel O-Ring	1
12	4171	<b>6123</b>	Handle Lock Ring	1
13	4172	<b>6122</b>	Exhaust Deflector	1
14	4173	<b>9101</b>	Chisel Retainer for Oval Collar (Standard) Models 2, 3, 4	1
*15	2428	<b>9105</b>	Retainer Lock Spring	1
*31	2405	<b>6136</b>	Handle Bushing	1
40-C	4180	<b>6111-C</b>	Handle Assembly	1
41	4159	<b>6110</b>	Push Pin Bushing	1
42	4158	<b>6109</b>	Push Pin	1
43	4155	<b>6115</b>	Throttle Valve Bushing	1
44-C	4153	<b>6114</b>	Throttle Valve Including 4154	1
44	4154	<b>6113</b>	Throttle Valve O-Ring	1
45	4156	<b>6116</b>	Throttle Valve Spring	1
46	4157	<b>6119</b>	Throttle Valve Plug	1
47	4150	<b>6117</b>	Trigger	1
48	4151	<b>6118-A</b>	Trigger Stop Pin	1
49	4152	<b>6118-B</b>	Trigger Fulcrum Pin	1
50	2460	<b>9135</b>	Air Inlet Swivel Assembly 7/8"-24 Thread, 1/2" Hose Barb	(1)
	**	<b>9135-S</b>	Air Inlet Swivel Assembly 3/8" NPT, 1/2" Hose Barb	(1)

\* DEPICTS INTERCHANGEABLE PARTS with KC15

\*\* DEPICTS INTERCHANGEABLE PARTS with 16R



### OPTION

