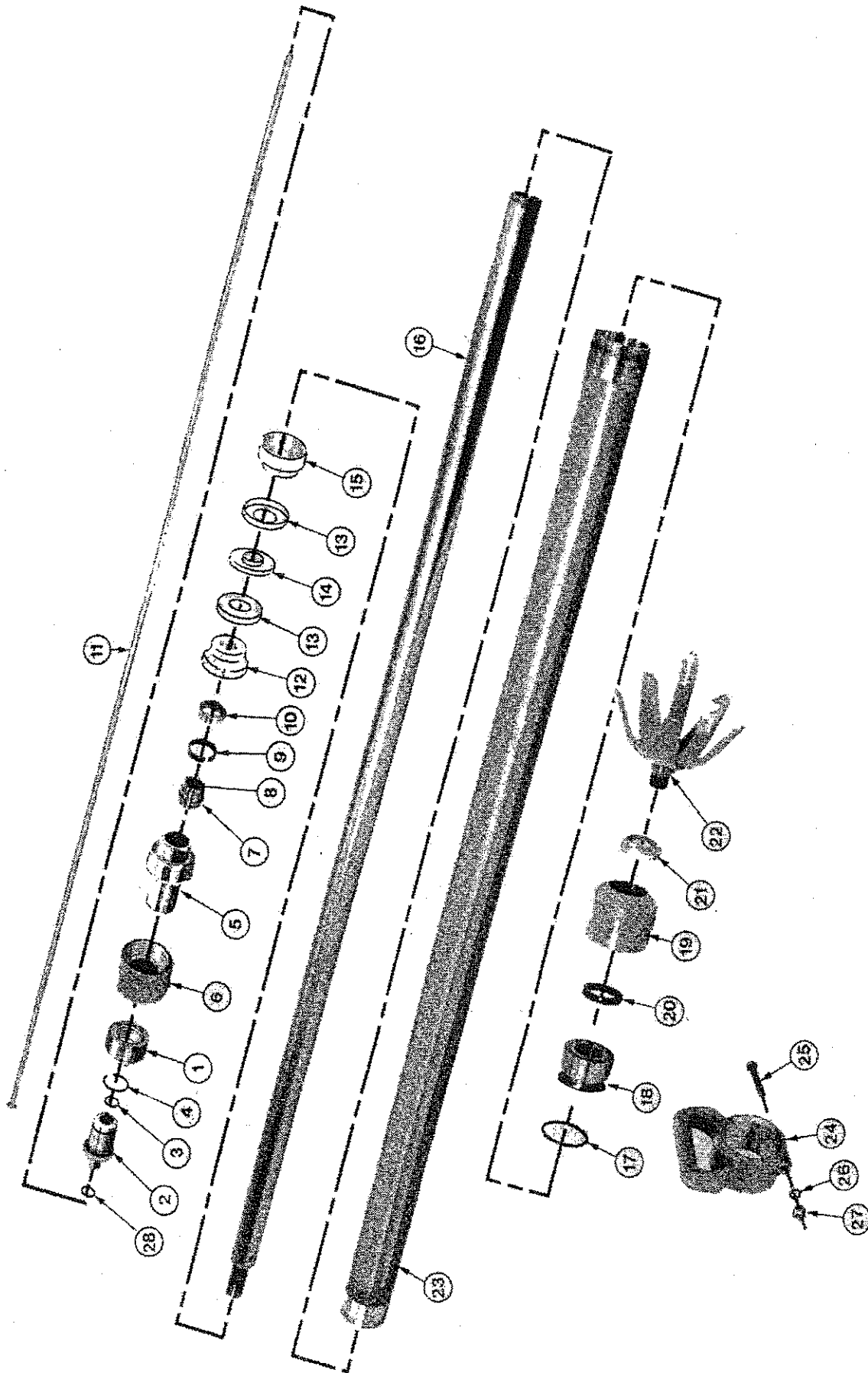


PARTS LIST

MW FL7



PARTS LIST

MW FL7

MW FL7 FEED LEG

FL7 KIT

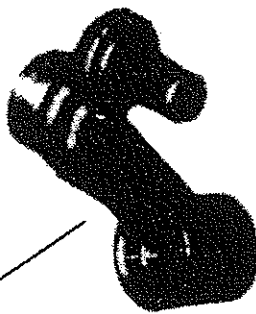
- (2) CL5441 O-Rings
- (2) 1R8320D Piston Cups
- (1) OR34 O-Ring
- (1) UCP1 Cup
- (1) FL630DB Seal
- (1) OR012P O-Ring

- POWER RETRACTED
- 2-5/8" DIAMETER PISTON
- ALUMINUM FEED CYLINDER
- QUICK DETACHABLE COUPLING
- 54" TRAVEL (SEE ALTERNATE PART FOR 36" & 42" TRAVEL)

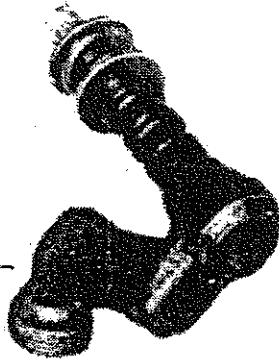
REF. NO.	PART NO.	DESCRIPTION	REF. NO.	PART NO.	DESCRIPTION
1	FL7202X	Cap Assembly - includes the next 6 parts	16	FL733ES	Feed Piston - 54"
2	FL7202	Coupling Nut		FL733CS	Feed Piston - 36"
3	FL7210A	Bushing Assembly - includes Item 8 CL5441 O-Ring		FL733DS	Feed Piston - 42"
4	CL5441	O-Ring	17	OR34	O-Ring
5	FL7211	Retainer Ring	18	FL731	Bushing
6	FL7203	Bushing & Clutch	19	FL727A	Cap Assembly - includes UCP1 U Cup Packing & FL630DB Seal
7	FL729	Cap	20	UCP1	Cup
8	FL721	Nut Assembly - includes Item 8 CL5441 O-Ring	21	FL630DB	Seal
9	CL5441	O-Ring	22	FL739S	Umbrella Point
10	FL7206	Clutch Ring	23	FL725E	Feed Cylinder - 54"
11	FL7207	Spacer		FL725C	Feed Cylinder - 36"
12	FL7205E	54" Air Tube Assy. - includes Item 28 OR012P O-Ring	24	FL725D	Feed Cylinder - 42"
13	FL7205C	36" Air Tube Assy. - includes Item 28 OR012P O-Ring		FL743X	Handle - Sold as ASM Only; includes TUL245 Bolt, WP10 Lock Washer and NH10 Nut
14	FL7205D	42" Air Tube Assy. - includes Item 28 OR012P O-Ring	25	TUL245	Bolt
15	FL7208	Piston Head Top	26	WP10	Lock Washer
	1R8320D	Piston Cup - 2 required	27	NH10	Thick Hex Nut
	FL738A	Spacer	28	OR012P	O-Ring
	FL7209	Piston Head Bottom			

SWIVEL FOR ADAPTING ROCK DRILLS TO VARIOUS LEGS

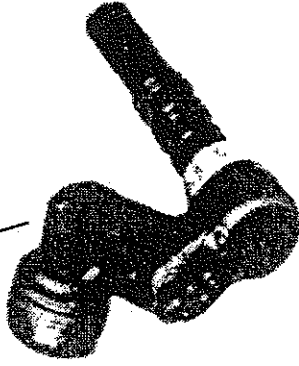
MWFL9-80 for S83F drill to push roof bolts (same as FL9-90X)



MW300-872 for Ingersoll Rand JR300 drill



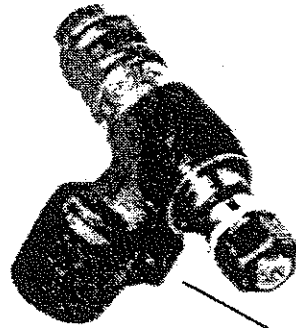
JR300-FL7X to adapt Ingersoll Rand JR300 drill to a FL7 leg



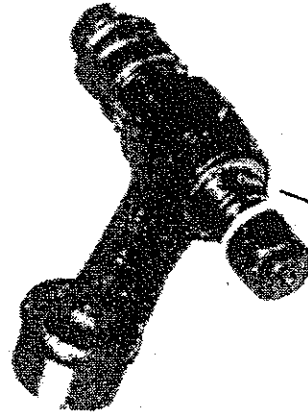
1FL7-310X for S83F drill to adapt to FL7 leg (retractable leg)



FL5-90X for Gardner Denver drill

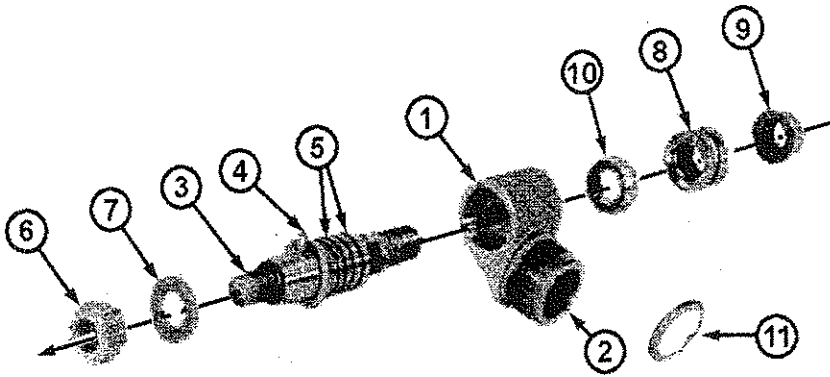


FL9-90X for Gardner Denver TFL 14 or Mid-Western Tu12 leg



SWIVEL ASSEMBLY

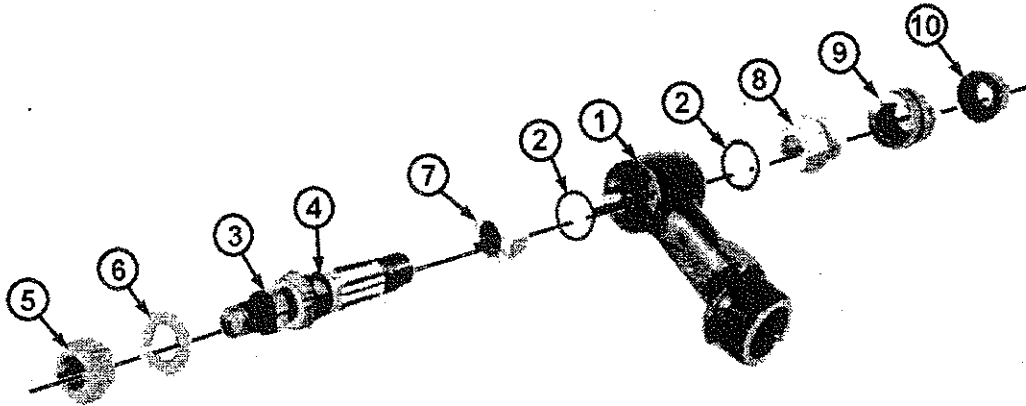
MW FL7, TUL2B



1FL7310X SWIVEL CONE ASSEMBLY
 • FOR USE WITH FL7 POWER RETRACTED FEED LEG

REF. NO.	PART NO.	DESCRIPTION	REF. NO.	PART NO.	DESCRIPTION
1	FL790	Swivel Assembly - includes O Ring	6	NH20	Nut
2	OR11	O Ring	7	WF12	Washer
3	1FL7594	Pivot Assembly - includes Pin and O Rings	8	FL597	Spring
4	FL7200	Pin	9	FL799	Nut
5	OR21	O Ring - 2 required	10	FL7201	Swivel Cone
			11	FL761	Seal

SWIVEL ASSEMBLY

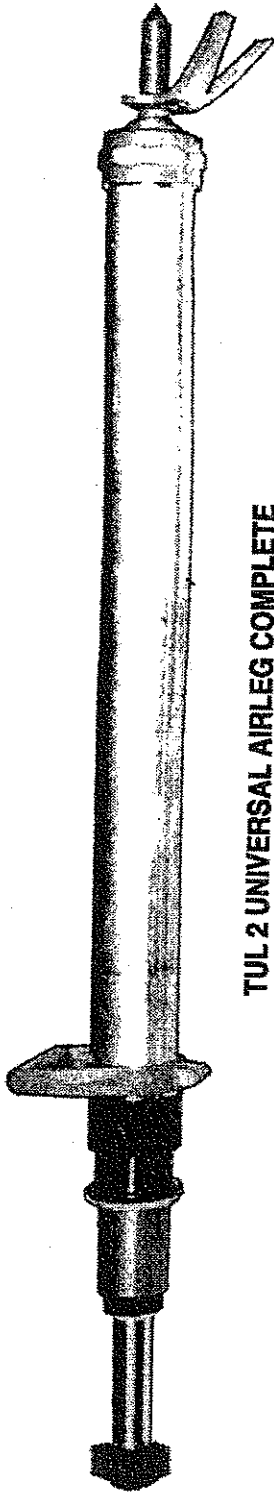


FL990X SWIVEL CONE ASSEMBLY
 • FOR USE WITH TUL2B

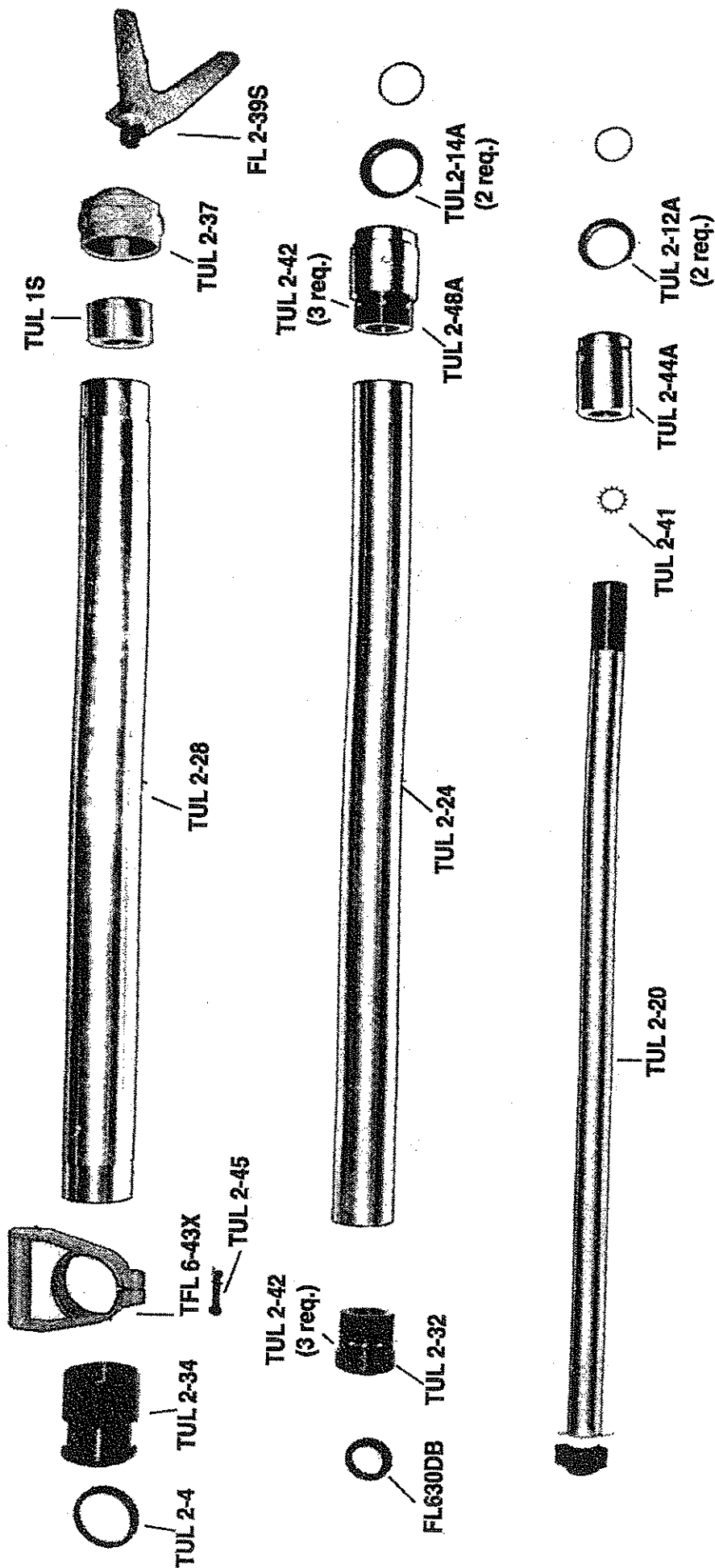
REF. NO.	PART NO.	DESCRIPTION	REF. NO.	PART NO.	DESCRIPTION
1	FL990	Swivel Assembly - includes O Rings	6	S5835W	Washer
2	OR24	O Ring - 2 required	7	FL994	Swivel Cone
3	FL591	Pivot Assembly - includes O Ring	8	FL995	Swivel Cone
4	OR15	O Ring	9	FL597	Spring
5	NH108	Nut	10	FL599	Nut

TUL 2 UNIVERSAL AIRLEG AND COMPONENTS

- TUL 2 KIT**
 (2) TUL 214A Cups
 (2) TUL 212A Cups
 (1) TUL 24 Seal
 (1) FL630DB Seal
 (6) TUL 242 Nylon Plugs



TUL 2 UNIVERSAL AIRLEG COMPLETE



TUL 2 LEGS

Length of Feed/Travel	Primary Cyl. No.	Length In.	Secondary Cyl. No.	Length In.	Feed Piston	Length In.	Collapsed Length	Extended In.	Length Ft.
2' 0"	TUL2-28-24	17	TUL2-24-24	17-1/8"	TUL2-20-24	18-3/8"	29-3/8"	53-3/8"	4' 5-3/8"
3' 0"	TUL2-28-36	23	TUL2-24-36	23-1/8"	TUL2-20-36	24-3/8"	35-3/8"	71-3/8"	5' 11-3/8"
4' 0"	TUL2-28-48	29	TUL2-24-48	29-1/8"	TUL2-20-48	30-3/8"	41-3/8"	89-3/8"	7' 5-3/8"
5' 0"	TUL2-28-60	35	TUL2-24-60	35-1/8"	TUL2-20-60	36-3/8"	47-3/8"	107-3/8"	8' 11-3/8"
6' 0"	TUL2-28-72	41	TUL2-24-72	41-1/8"	TUL2-20-72	42-3/8"	53-3/8"	125-3/8"	10' 5-3/8"

OVERALL LENGTH = END OF FEED PISTON TO END OF Y-POINT

MID-WESTERN FL7 RETRACTABLE FEED LEG

The FL7 Pneumatic Feed Leg is offered in combination with one of our two MWS83F jackleg drills. The MWS83FA is equipped with a 7/8" chuck liner and steel puller, and the MWS83FB is equipped with a 1" chuck liner and steel puller. All parts are manufactured with top quality materials to give our customers dependability and long life with our legs. These are offered in a standard size of 54" of travel. Other lengths are available upon request with a small minimum order.

Feed Force of the FL7 Feed Leg

<u>Air P.S.I.</u>	<u>Ft. lbs. of pressure</u>
40	175
50	225
60	276
70	326
80	378
90	427
100	477
110	531

Main Characteristics of the FL7 Retracting Feed Leg

Length of Feed	Collapsed Length	Extended Length	Weight
36 inches	54 inches	90 inches	13.90 kg
42 inches	60 inches	102 inches	16.60 kg
54 inches	72 inches	126 inches	18.40 kg

