

# MP60

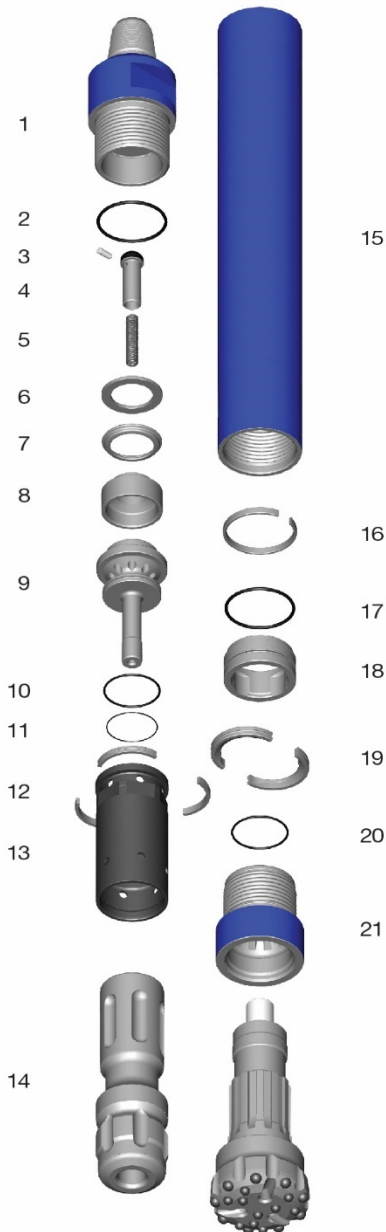


## Parts and Specifications

Copyright © Mincon 2020, All Rights Reserved.



## Mincon MP60 Parts and Specifications



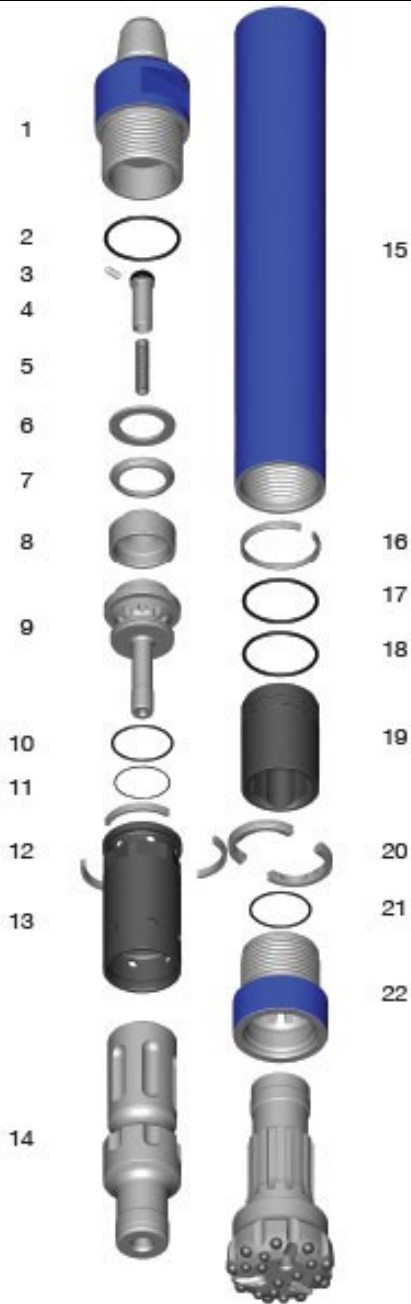
Item #	Part Number	Description
	<b>MC601AS06</b>	<b>Mincon MP60 (3 1/2" A.P.I. Reg. Pin)</b>
1	MC601BH04	Backhead (3 1/2" A.P.I. Reg. Pin)
2	MD622OR01	O Ring
3	MB506CH01	Choke Blank
4	MB502CV01	Check Valve
5	MB503SP01	Spring
6	MB504SM01	Steel Make-Up Ring
7	MB505LR01	Lock Ring
8	MC603LM01	Lock Ring Mount
9	MD607DR01	Air Distributor
10	MD621OR01	O Ring
11	MD620OR01	O Ring
12	MC609SR01	Seating Ring
13	MC608IC01	Inner Cylinder
14	MP610PN02	Piston
15	MC611WS02	Wear Sleeve
16	MC612PR01	Piston Retaining Ring
17	MD622OR01	O Ring
18	MP613BB01	Aligner
19	MP614BR02	Bit Retaining Ring
20	MD621OR01	O Ring
21	MC615CK03	Chuck (QL60)
-	MD626SK05	Service Kit
	<b>MD626SK05</b>	<b>Service Kit</b>
3	MB506CH01	Choke Blank
-	MB506CH02	Choke 1/8" (3.2mm)
-	MB506CH03	Choke 3/16" (4.8mm)
5	MB503SP01	Spring
-	MD625OK04	O Ring Kit
	<b>MD625OK05</b>	<b>O Ring Kit</b>
2	MD622OR01	O Ring
10	MD621OR01	O Ring
11	MD620OR01	O Ring
17	MD622OR01	O Ring
19	MD621OR01	O Ring

### Specification

Hammer Outside Diameter	140mm (5.5")
Hammer Length (Less Bit, Backhead Shoulder to Chuck)	1002mm (39.4")
Backhead Spanner Flat Size	100mm (4")
Drill Bit Shank Type	QL60
Minimum Bit Size	152mm (6")
Hammer Weight (Less Bit)	81.9kg (181 lbs)
Typical Drill Bit Weight	24.5kg (54 lbs)
Piston Weight	21.6kg (47.6 lbs)
Backhead Stand Off	0.75mm (0.03")
Make-up Torque	6,100 – 8.135Nm (4,500 – 6,000 lbf.ft)
Wear Sleeve Reverse Limit	Non-Reversible
Wear Sleeve Discard Limit	130.7mm (5.15")
Recommended Minimum Air Package	283 l/s @ 20.7 bar (600 cfm @ 300 psi)



## Mincon MP60-MQ Parts and Specifications



Item #	Part Number	Description
<b>Mincon MP60MQ (3 1/2" A.P.I. Reg. Pin)</b>		
	<b>MC601AS07</b>	
1	MC601BH04	Backhead (3 1/2" A.P.I. Reg. Pin)
2	MD622OR01	O Ring
3	MB506CH01	Choke Blank
4	MB502CV01	Check Valve
5	MB503SP01	Spring
6	MB504SM01	Steel Make-Up Ring
7	MB505LR01	Lock Ring
8	MC603LM01	Lock Ring Mount
9	MD607DR01	Air Distributor
10	MD621OR01	O Ring
11	MD620OR01	O Ring
12	MC609SR01	Seating Ring
13	MC608IC01	Inner Cylinder
14	MC610PN01	Piston
15	MC611WS02	Wear Sleeve
16	MC612PR01	Piston Retaining Ring
17	MD622OR01	O Ring
18	MD622OR01	O Ring
19	MC613BB01	Aligner
20	MC614BR01	Bit Retaining Ring
21	MD621OR01	O Ring
22	MC615CK03	Chuck (QL60)
23	MD626SK04	Service Kit
<b>MD626SK04 Service Kit</b>		
3	MB506CH01	Choke Blank
-	MB506CH02	Choke 1/8" (3.2mm)
-	MB506CH03	Choke 3/16" (4.8mm)
5	MB503SP01	Spring
-	MD625OK04	O Ring Kit
<b>MD625OK04 O Ring Kit</b>		
2	MD622OR01	O Ring
10	MD621OR01	O Ring
11	MD620OR01	O Ring
17	MD622OR01	O Ring
18	MD622OR01	O Ring
21	MD621OR01	O Ring

### Specification

Hammer Outside Diameter	140mm (5.5")
Hammer Length (Less Bit, Backhead Shoulder to Chuck)	1002mm (39.4")
Backhead Spanner Flat Size	100mm (4")
Drill Bit Shank Type	QL60
Minimum Bit Size	152mm (6")
Hammer Weight (Less Bit)	83.3kg (184 lbs)
Typical Drill Bit Weight	24.5kg (54 lbs)
Piston Weight	19.3kg (42.5 lbs)
Backhead Stand Off	0.75mm (0.03")
Make-up Torque	6,100 – 8.135Nm (4,500 – 6,000 lbf.ft)
Wear Sleeve Reverse Limit	Non-Reversible
Wear Sleeve Discard Limit	130.7mm (5.15")
Recommended Minimum Air Package	283 l/s @ 20.7 bar (600 cfm @ 300 psi)