



**Performance & Quality Driven**  
**“Down The Hole” Hammers & Bits**

# Mincon 6DH360

## Why Buy the Mincon 6DH360?

The Mincon 6DH360 has proven itself the best hammer on the market in all kinds of demanding conditions and applications. The Mincon 6DH360 delivers superior penetration rates versus other manufacturers with extremely smooth drilling.

Like all Mincon DTH hammers, the Mincon 6DH360 maintains excellent operating pressure over an extended service life and overall is the tool you require to get the maximum out of all your equipment.

Mincon Products are all manufactured in house, and all processes are carried out under the one roof. This guarantees that the quality you “Expect” is always delivered.

## Design Highlights:

- ▶ Design allows for increased penetration against large volumes of water, and also allows for the introduction of more water in unstable conditions.
- ▶ Unique manufacturing processes extend internal components life allowing for multiple rebuilds in abrasive conditions.
- ▶ Valveless operation to maximize energy output, provide efficient air utilization and reduce service requirements.
- ▶ Extra air-flow system allows for better hole cleaning in troublesome holes.
- ▶ Reversible hardened wear sleeve for optimum wear resistance even in the most abrasive conditions.
- ▶ Multi-start threads on backhead and chuck ensure easy coupling/uncoupling of hammer.
- ▶ Unique internal mount system gives positive make-up and eliminates the need for wear shims and special assembly tools.
- ▶ All critical internal components are heat treated under strict control to maximize tool longevity.
- ▶ An overall cost-effective and user friendly tool for use in the most demanding conditions.



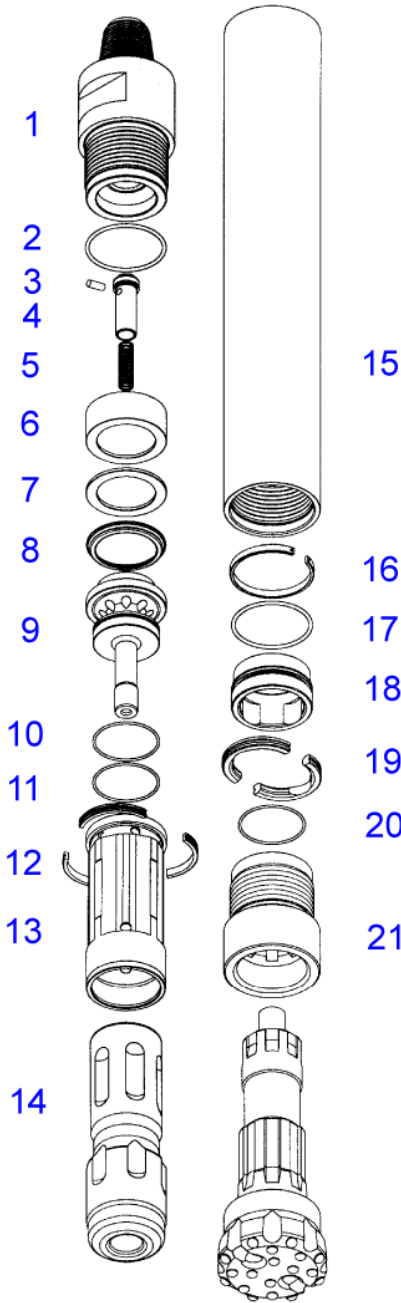
## Mincon 6DH360

### Applications:

- Water Well
- Exploration
- Construction

***‘The Driller’s Choice’***

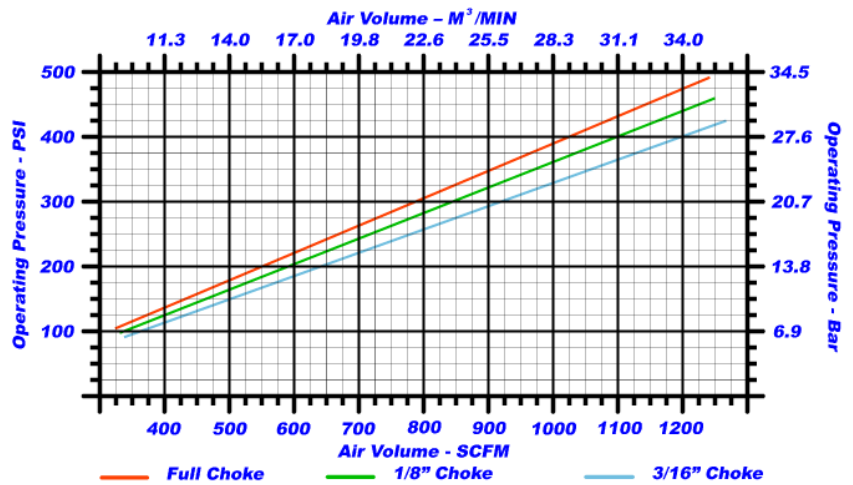
***“LEADERS IN THE FIELD OF DRILLING TECHNOLOGY”***



## MINCON 6DH360 PARTS LIST & SPECIFICATION

Item	Description	Part No.
	Mincon 6DH360 Hammer	M3601AS01
1	Backhead	MD601BH01
2	O Ring	MD622OR01
3	Choke Blank	MB506CH01
	Choke 1/8" (3.2mm)	MB506CH02
	Choke 3/16" (4.8mm)	MB506CH03
4	Check Valve	MB502CV01
5	Spring	MB503SP01
6	Spacer	M3604SR01
7	Steel Make Up Ring	MD604SM01
8	Lock Ring	MD605LR01
9	Air Distributor	M3607DR01
10	O Ring	MD621OR01
11	O Ring	MD620OR01
12	Seating Ring	MD609SR01
13	Inner Cylinder	MD608IC01
14	Piston	M3610PN01
15	Wear Sleeve	M3611WS01
16	Piston Retaining Ring	MD612PR01
17	O Ring	MD622OR01
18	Aligner	M3613BB01
19	Bit Retaining Ring	M3614BR01
20	O Ring	MD621OR01
21	Chuck	M3615CK01
Outside Diameter		5.5" / 140mm
Minimum Bit Size		6" / 152mm
Spanner Flat Size		4" / 100mm
Length (Less Bit, Backhead Shoulder to Chuck)		44.6" / 1133mm
Bit Shank Type		DHD360
Backhead Thread		3 1/2" A.P.I. Reg. Pin
Piston Weight		44 Lbs / 20 Kgs
Wear Sleeve Discard Limit		5.060" / 128.5mm

### OPERATING PRESSURE / AIR CONSUMPTION



### Mincon International Ltd

Shannon, Co. Clare

Ireland

Telephone: +353 61 361 099

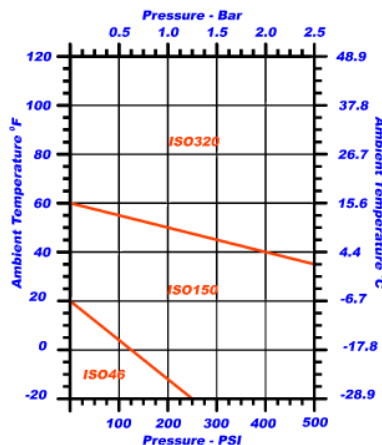
Fax: +353 61 361 808

Email: [mincon@mincon.com](mailto:mincon@mincon.com)

Web: <http://www.mincon.com>

**Distributed by:**

### ROCKDRILL OIL GRADE



### ROCKDRILL OIL CONSUMPTION

